

MEETING RECORD

DATE/TIME: Aug 25, 2020 8:30 – 10:30

PROJECT NAME/NO: East Missoula Hwy 200 Corridor Planning

SUBJECT: Advisory Committee Meeting #6, Online Zoom Meeting

BY: Anne Cossitt, WGM Group

ATTENDEES: Chris Behan (MRA), Lee Bridges (East Missoula Community Council), Vince Caristo (Mountain Line), Vicki Crnich (MDT), Andrew Hagemeier (Missoula County CAPs), Neil Miner (City Parks and Rec), Lindsey Romanie (Missoula County CAPs), John Sand (MMPO), Shane Stack (County Public Works), John Stegmaier (County Parks and Trails), Ben Weiss (City Bicycle and Pedestrian), Aaron Wilson (MMPO), Stephen McDaniel (WGM), Kate Dinsmore (WGM), Anne Cossitt (WGM)

Meeting Purpose:

Finalize Advisory Committee Guidance on Preferred Alternative - a continuation of work begun at Advisory Committee Meeting #5 on August 7

Kate Dinsmore presented a recommended preferred alternative prepared by WGM and that was the basis for discussion at this meeting. A marked-up copy showing changes from the meeting is attached.

The committee went through the recommendation section by section with the following changes.

1. Van Buren – East Missoula
 - 1) Prioritize bike lane over on-street parking on south side
 - 2) Keep on-street parking where 80' width allows
 - 3) Shared-Use Path – 10' minimum, go wider where you can – it's esp important by east gate
 - 4) Consider future changes in existing development -- Provisions for easements to better accommodate bike/ped, also potential for landscaped boulevard – show in design
 - 5) Recognize the river path may still occur, but not part of this plan but see potential for both to be realized – river path could be different type of use
 - 6) Speed limit change – monitor need

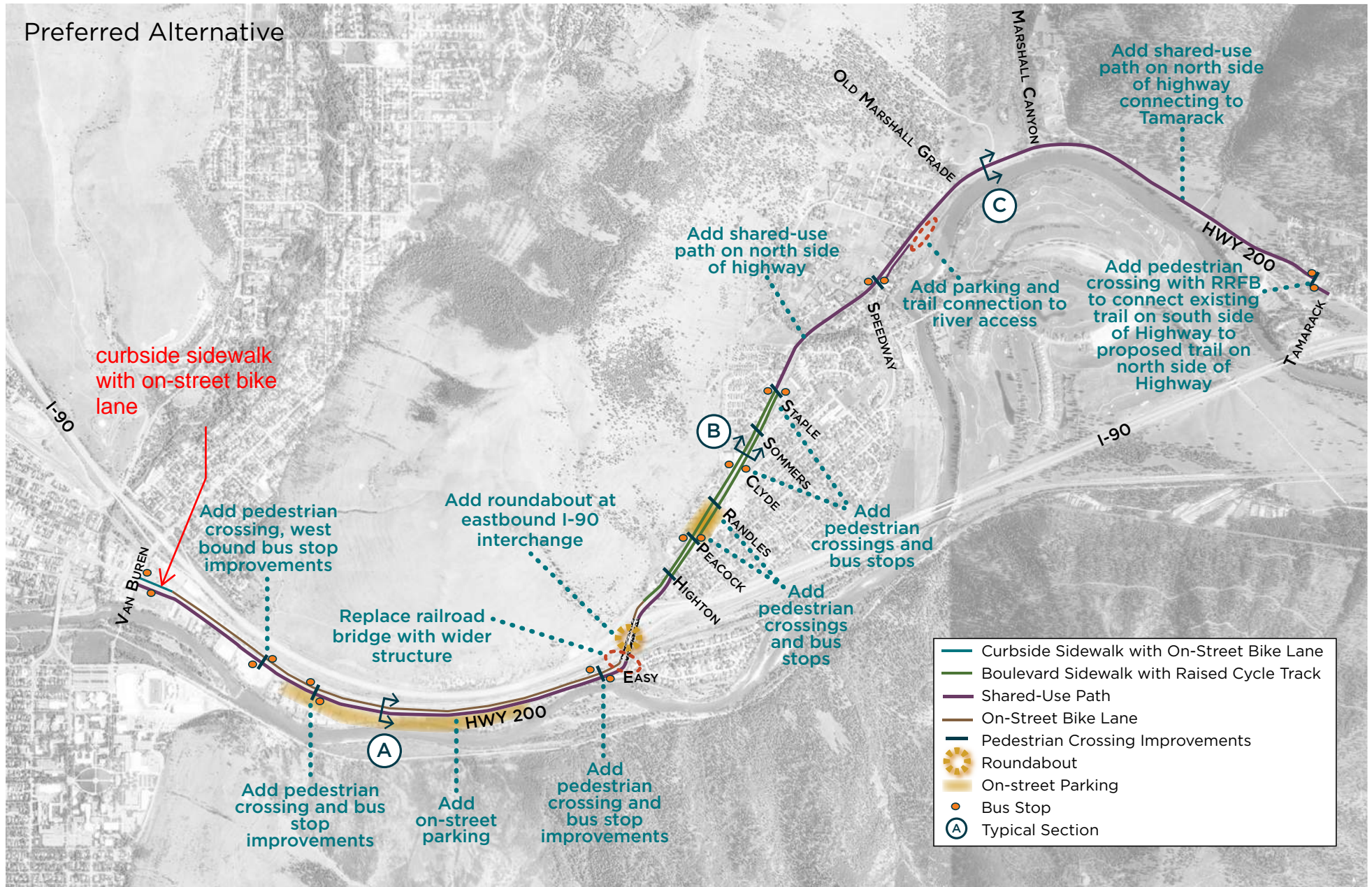
2. RR-I90 – No changes
3. East Missoula
 - 1) Refine the transitions from cycle tracks in street to shared use path at Staple Street – consider moving and pay attention to how it interacts with bus stops
 - 2) Incorporate transit stops into design
4. Sha-Ron Marshall Segment – Show the bus stop
5. Lighting
WGM Proposal:
 - Sha-Ron – no lighting
 - E. Msla – decorative lighting for bike/ped/cars
 - E. Broadway – lighting at crossings, and/or lighting on shared-use path

Advisory Committee recommendation: go with this approach, which provides for lighting in higher use areas instead of continuous

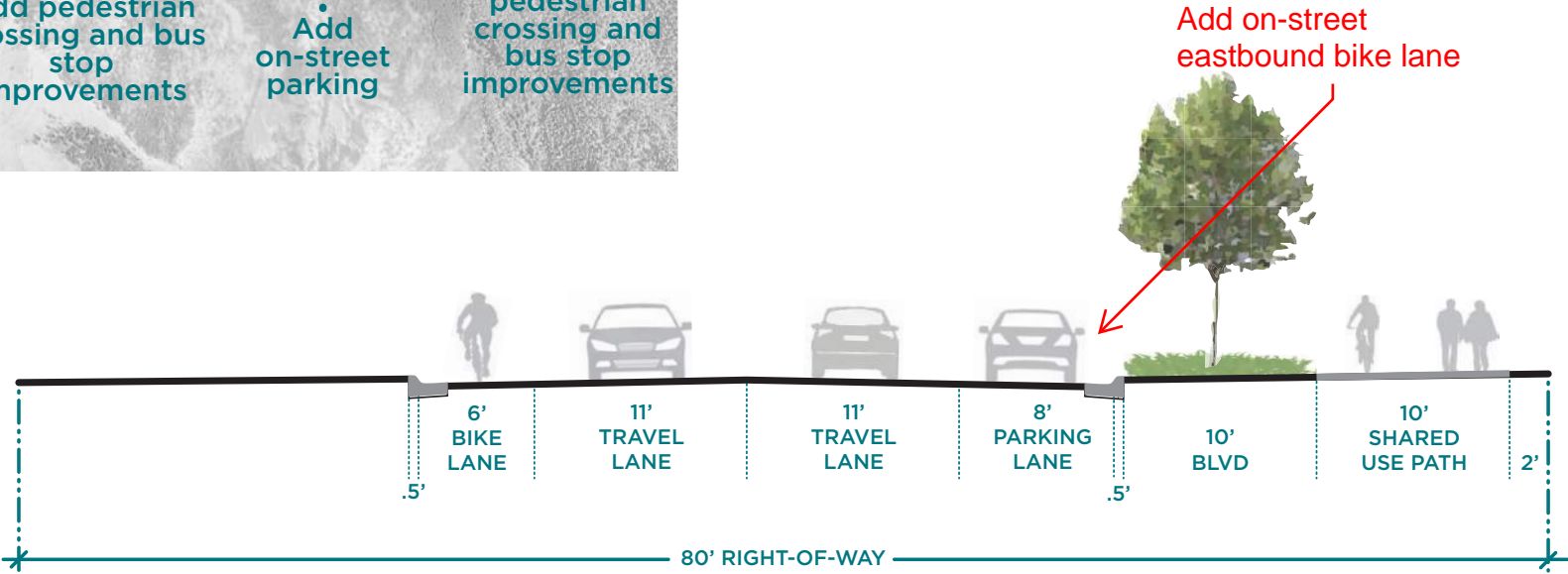
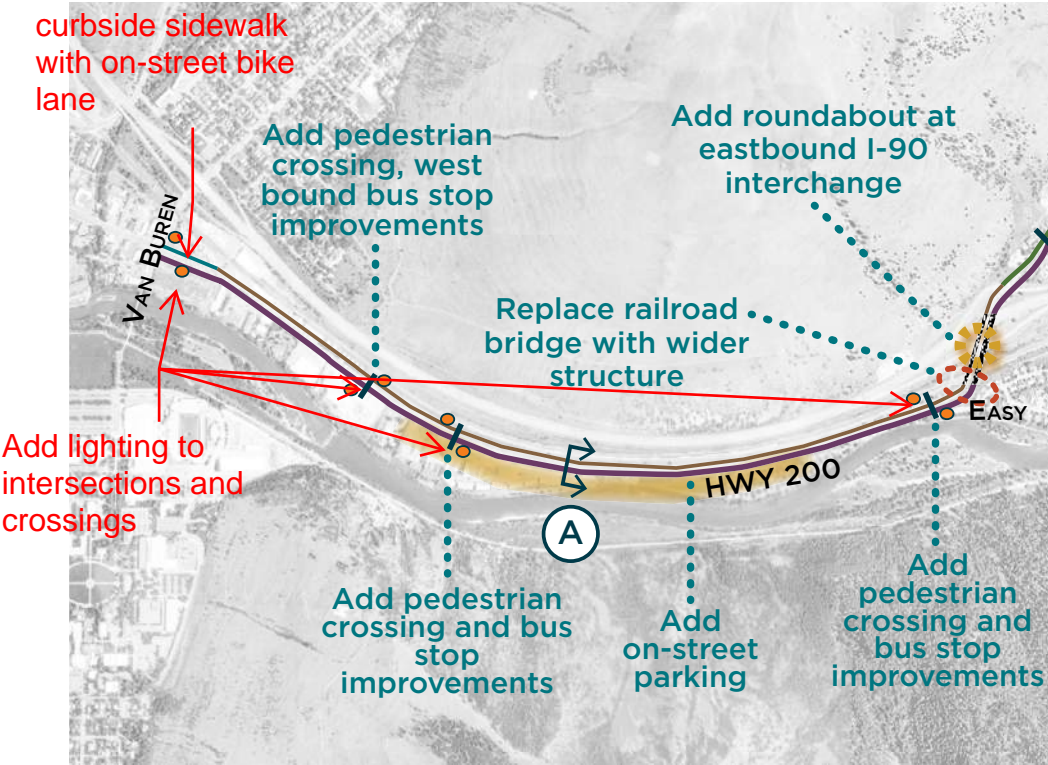
Next steps:

1. WGM will make modifications to the proposed alternative and send it out to the Advisory Committee before it is released to the public in October

Preferred Alternative



East Broadway Segment

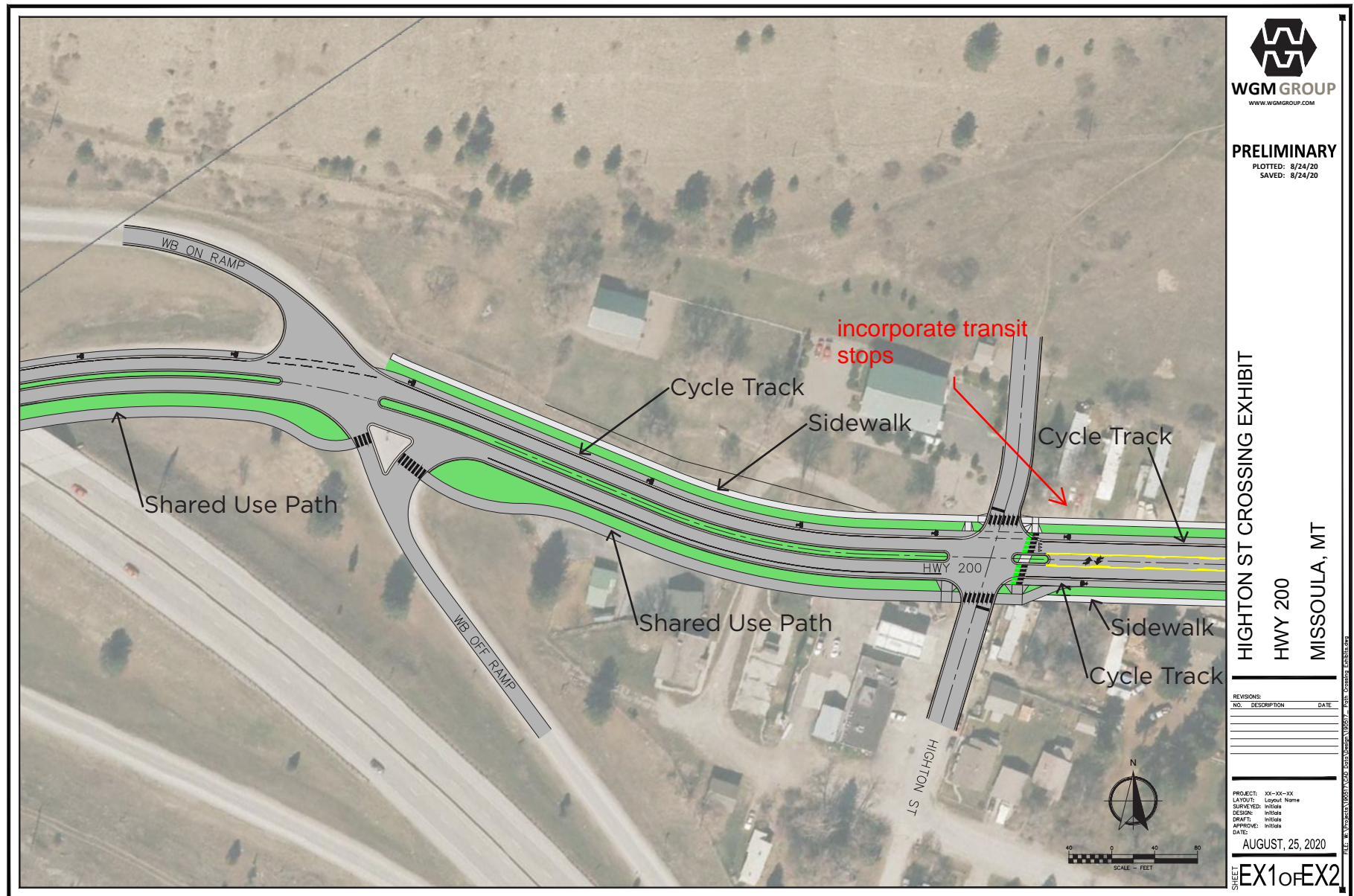


A East Broadway Segment Typical Section

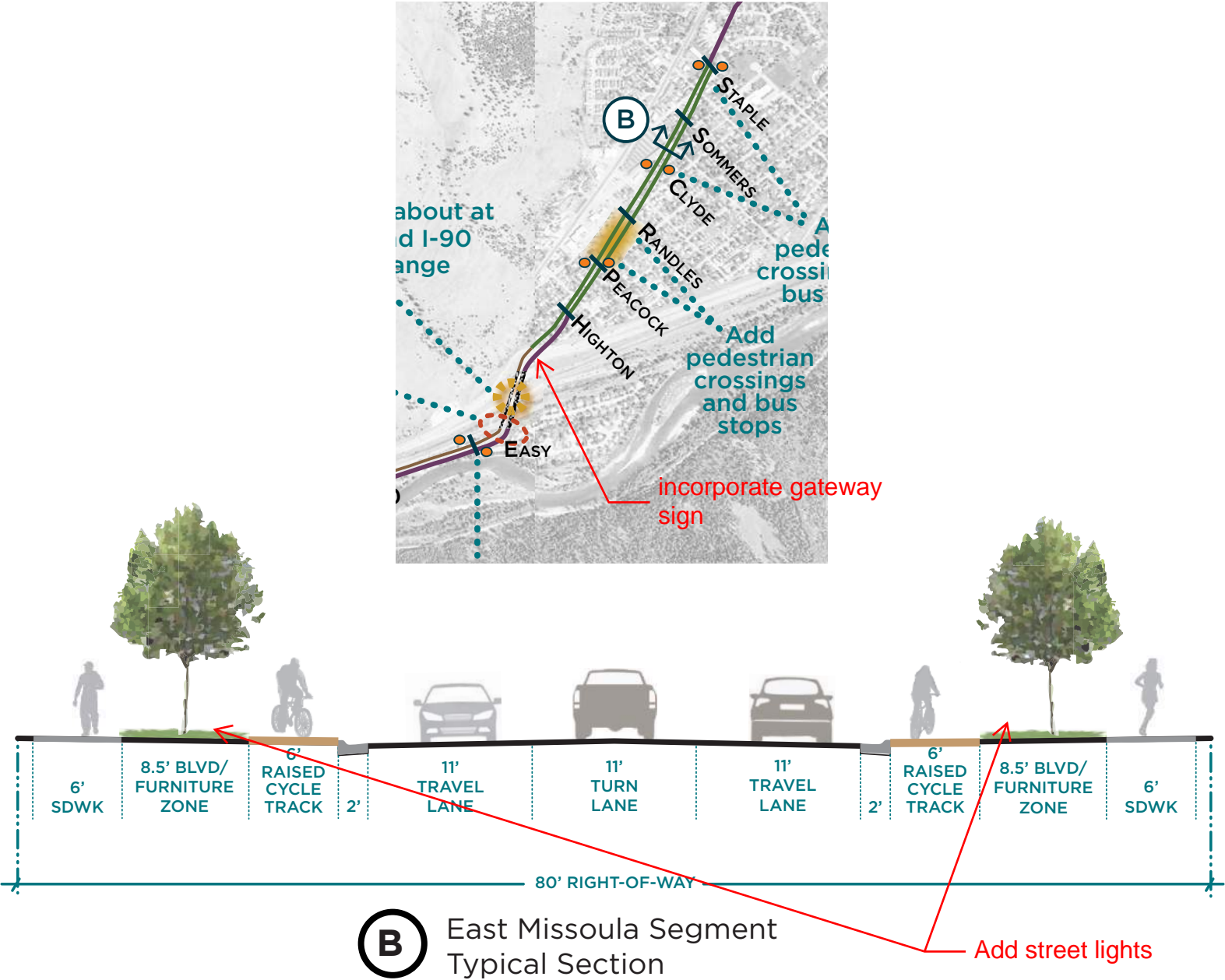
*Right-of-way width varies from 60' to 80'.

Prioritize eastbound bike lane over parking lane if limited by right-of-way width

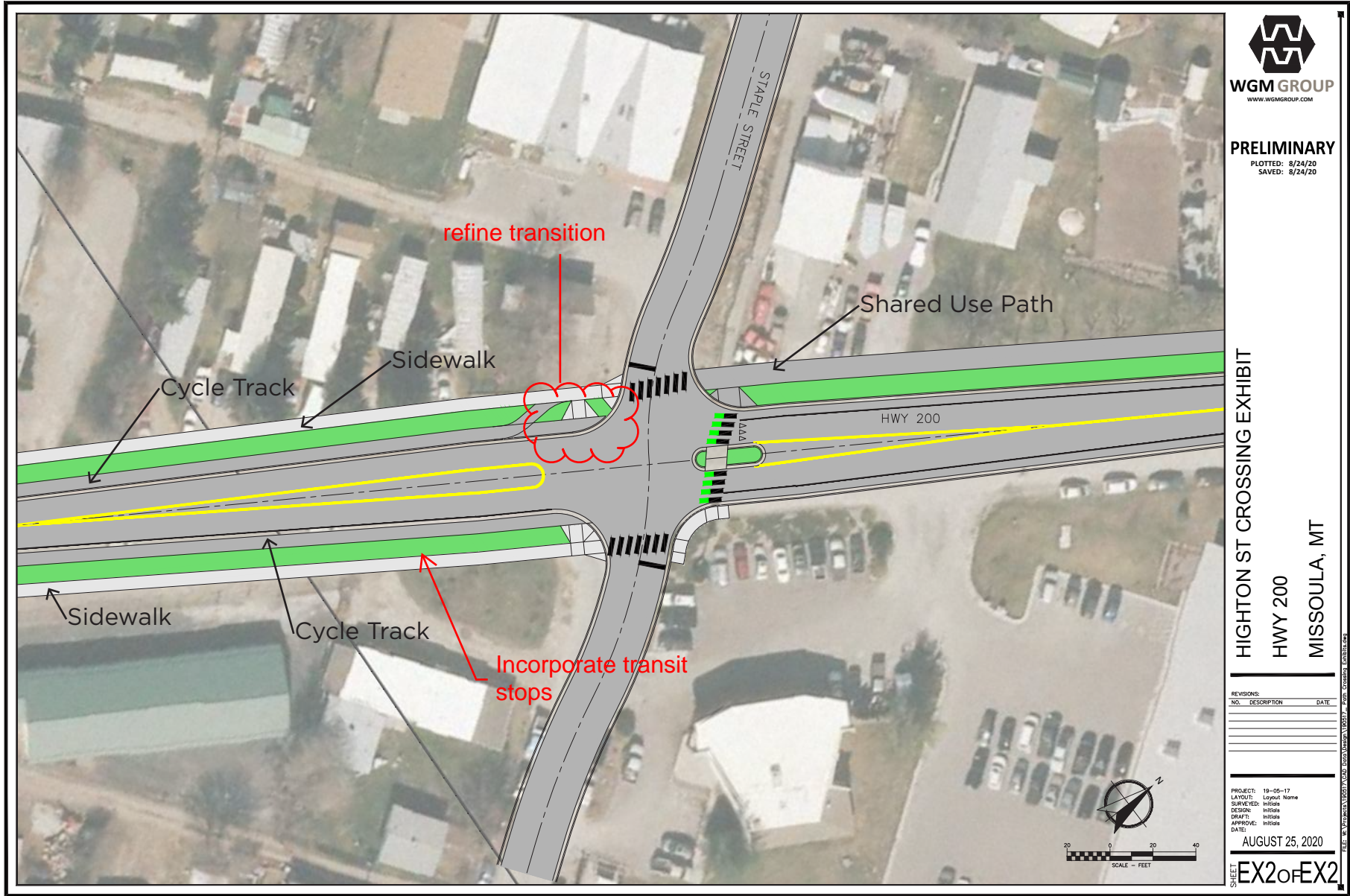
Transition from Shared Use Path to Cycle Track



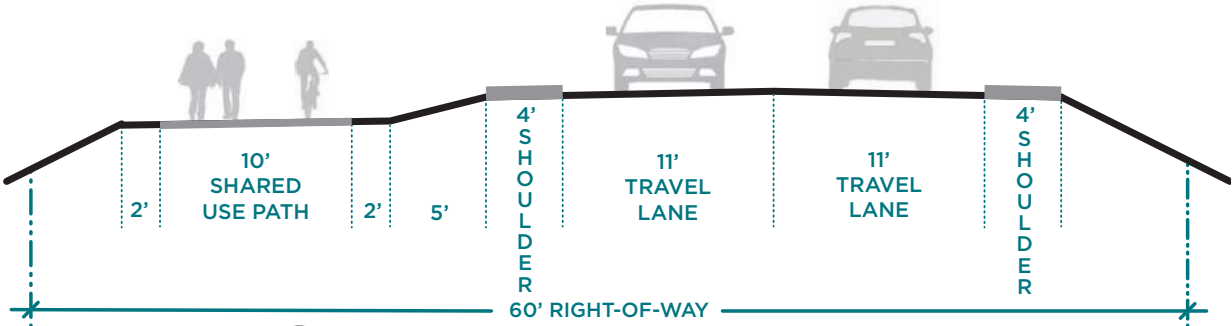
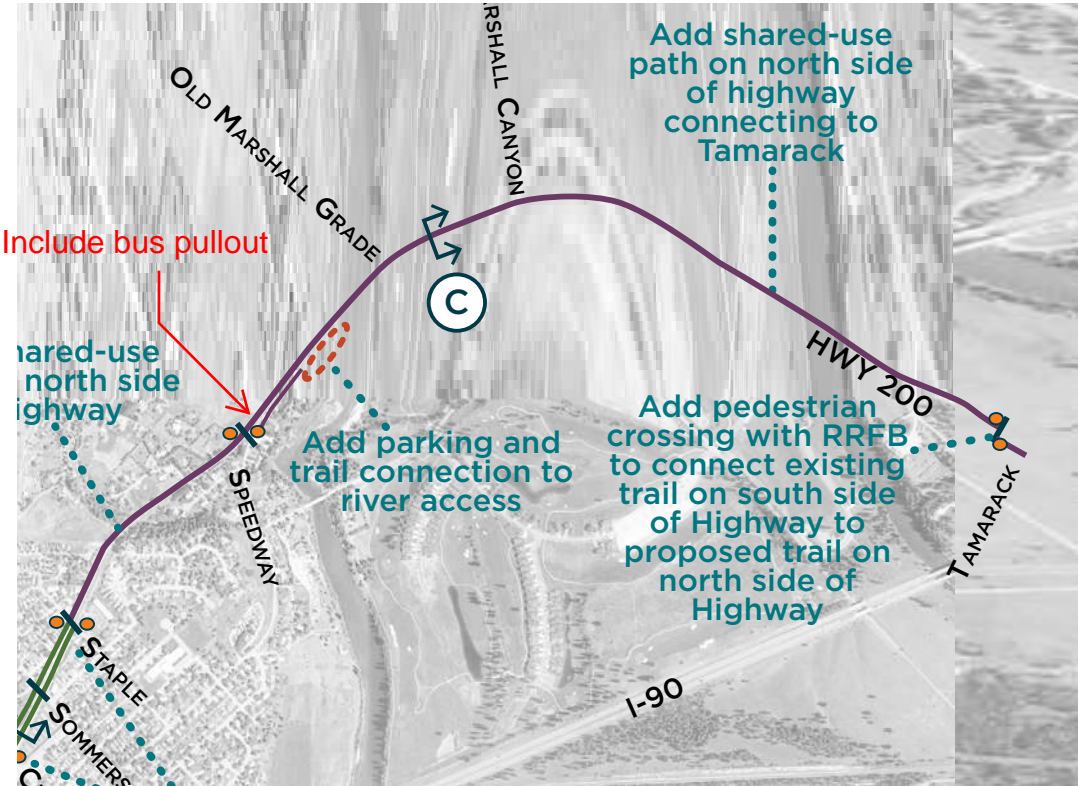
East Missoula Segment



Transition from Cycle Track to Shared Use Path



Sha-Ron Marshall Segment



© Sha-Ron Marshall Segment
Typical Section