



2050 Long-Range Transportation Plan

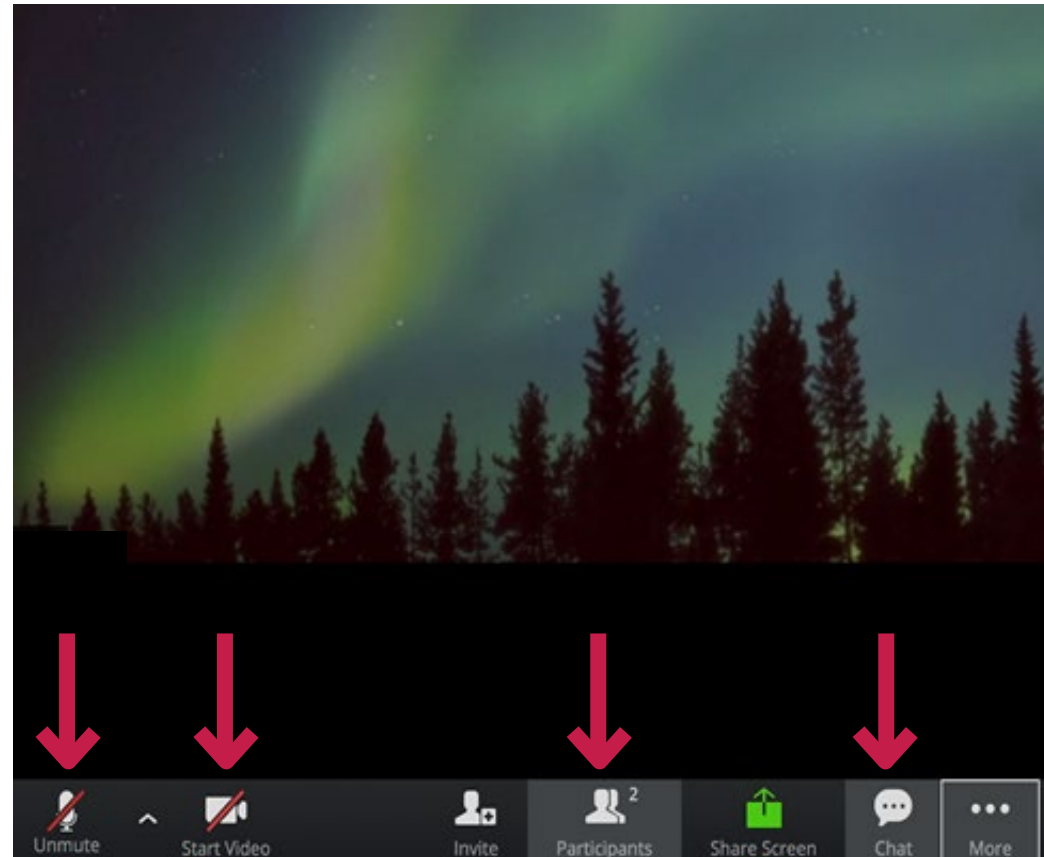
L RTP Technical Advisory Committee
June 12, 2020



Welcome & Introductions

Update and simplify

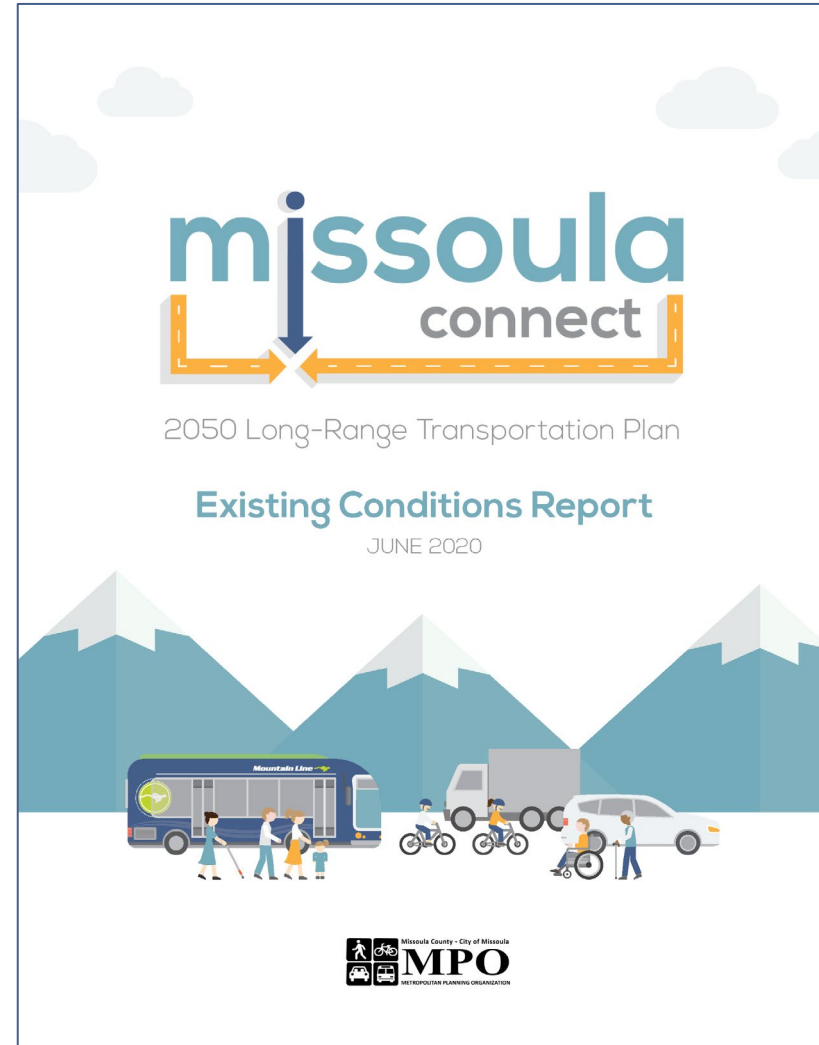
- Review meeting goals
- Review Zoom features
- Share your name, affiliation, the most unusual thing you've eaten during quarantine, and what you hope to get out of today's meeting



Recent Work

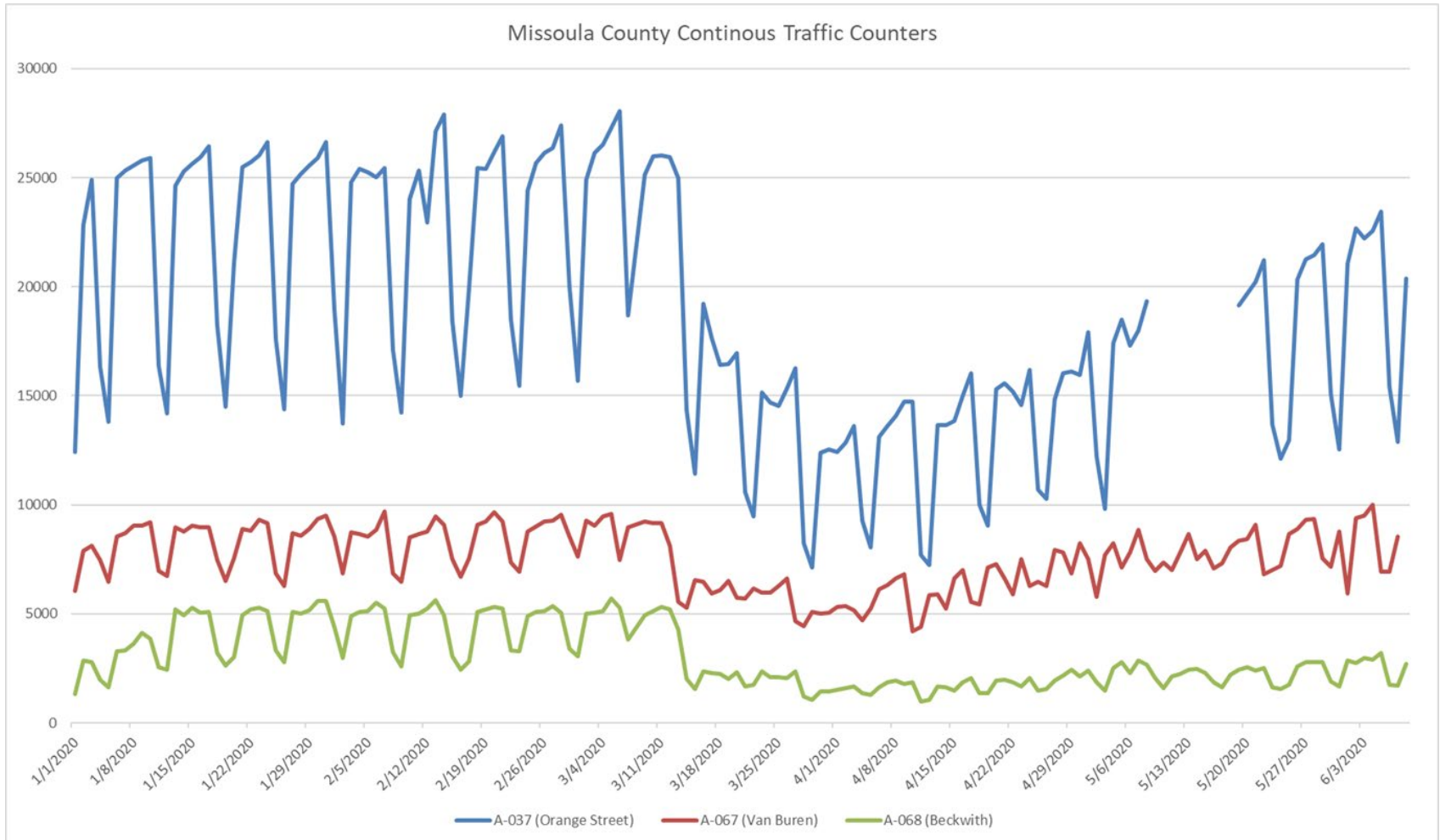
A busy month of May

- Participated in 10+ updates and briefings
- Completed existing conditions report
- Developed preliminary goals and desired outcomes
- Launched call for projects
- Created first two videos in a new series
- Prepared draft evaluation framework



Economic Reopening

New travel data



Developing Goals

Build on what works



Federal Goals
and Planning
Factors



Other Missoula
Plans



ACTIVATE
MISSOULA 2045
2016 LRTP



Mobility
Values

Preliminary Goals & Outcomes

Update and simplify



- Improve safety and promote health to enhance quality of life



- Advance sustainability and climate resilience to protect natural and historic resources



- Expand mobility choices to improve efficiency and accessibility



- Connect and strengthen communities to create a more equitable region



- Maintain assets and invest strategically to boost economic vitality

TAC Discussion

Preliminary goals and outcomes

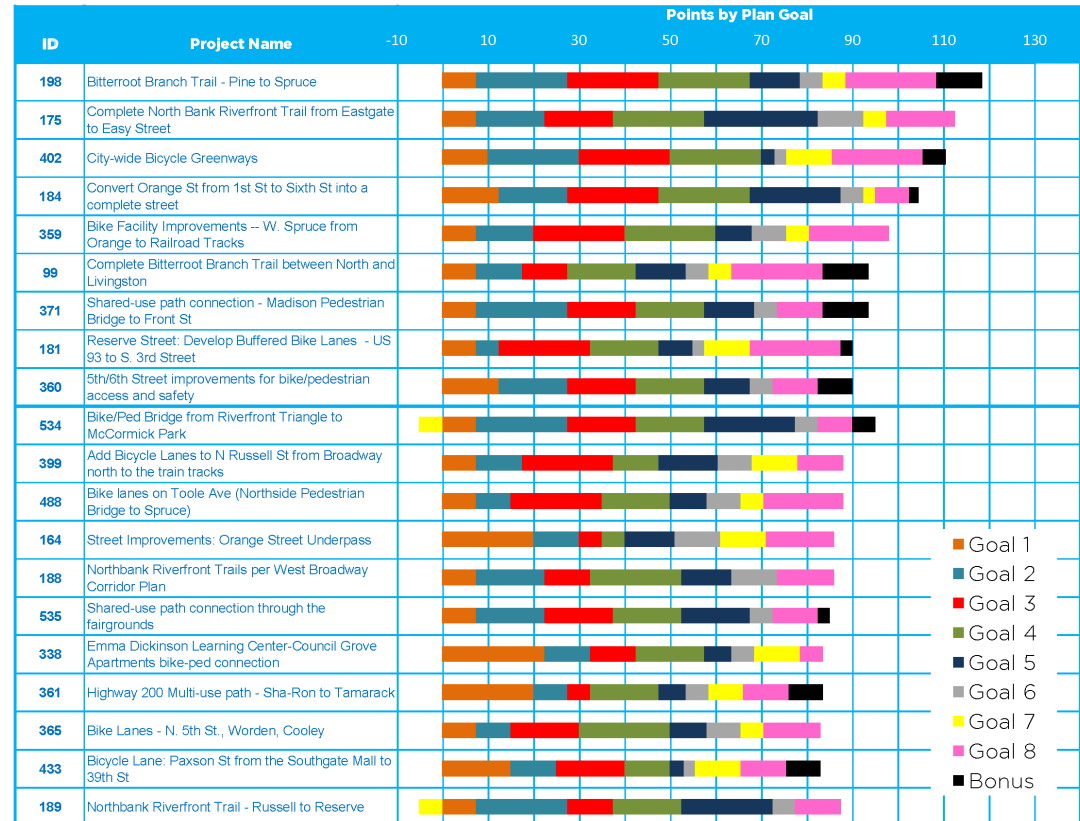
- Did we get these goals and outcomes right?
- Do they reflect federal requirements and what matters most to Missoula?
- What's missing? Is there another goal or outcome that should be part of our focus?
- Which of the goals are most important to you?
- And which outcomes should we prioritize?



TAC Discussion

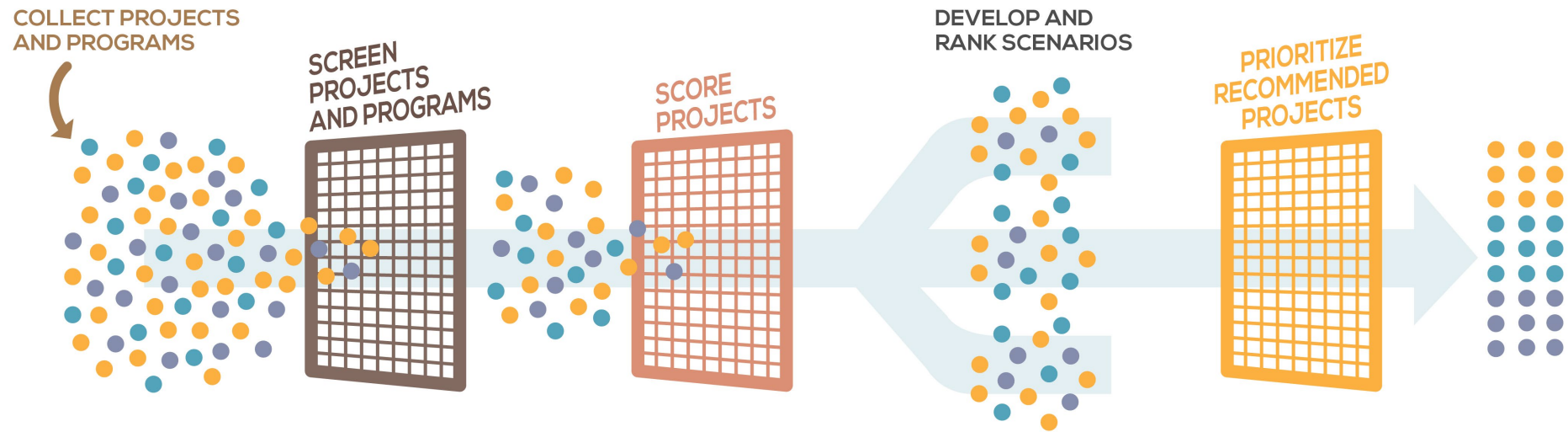
Evaluation and prioritization approach

- How did you feel about the process used for the 2016 long-range plan?
- What were some of the strengths? And weaknesses?
- What should be kept or refined? What should be scrapped?



Refining the Approach

Streamline and clarify



Step 1: Collect Projects & Programs

Open public invitation



INSTRUCTIONS

- 1 Zoom to your area of interest
- 2 Click **DRAW A LINE** or **DRAW A POINT** and choose a category
- 3 Draw as many items as you'd like and add a description to each
- 4 Click on other submitted ideas to add comments

POINT CATEGORIES



LINE CATEGORIES



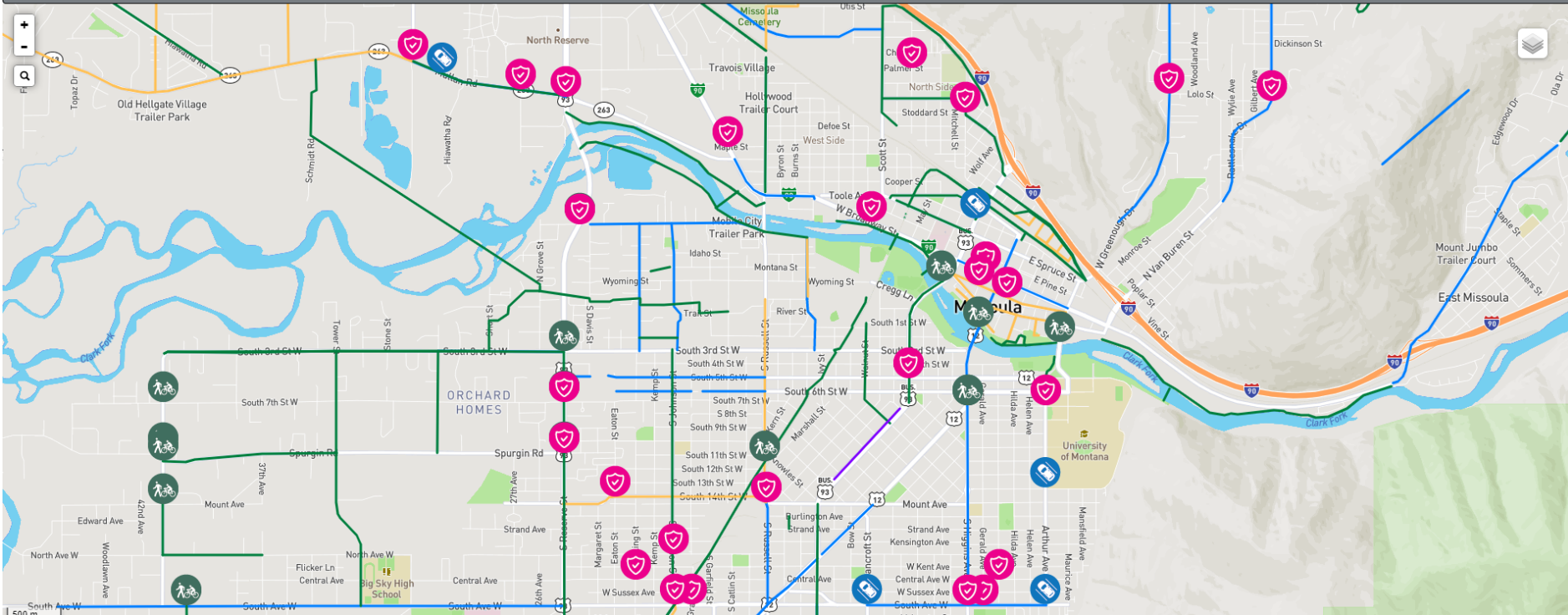
Missoula LRTP Update Call for Projects

About & Help

DRAW A LINE

DRAW A POINT

Share 0 Guest

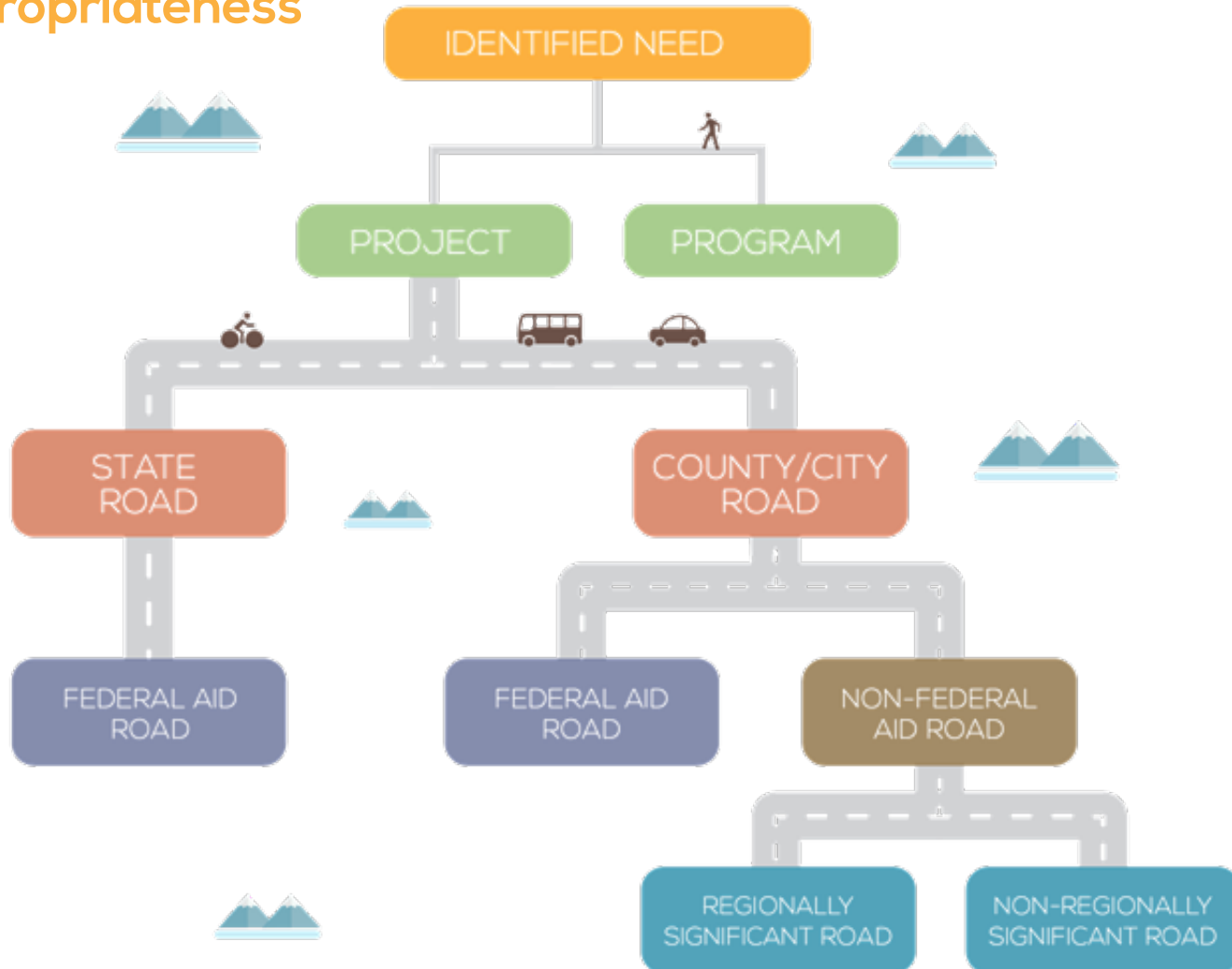


2050 Long-Range Transportation Plan



Step 2: Screen Projects & Programs

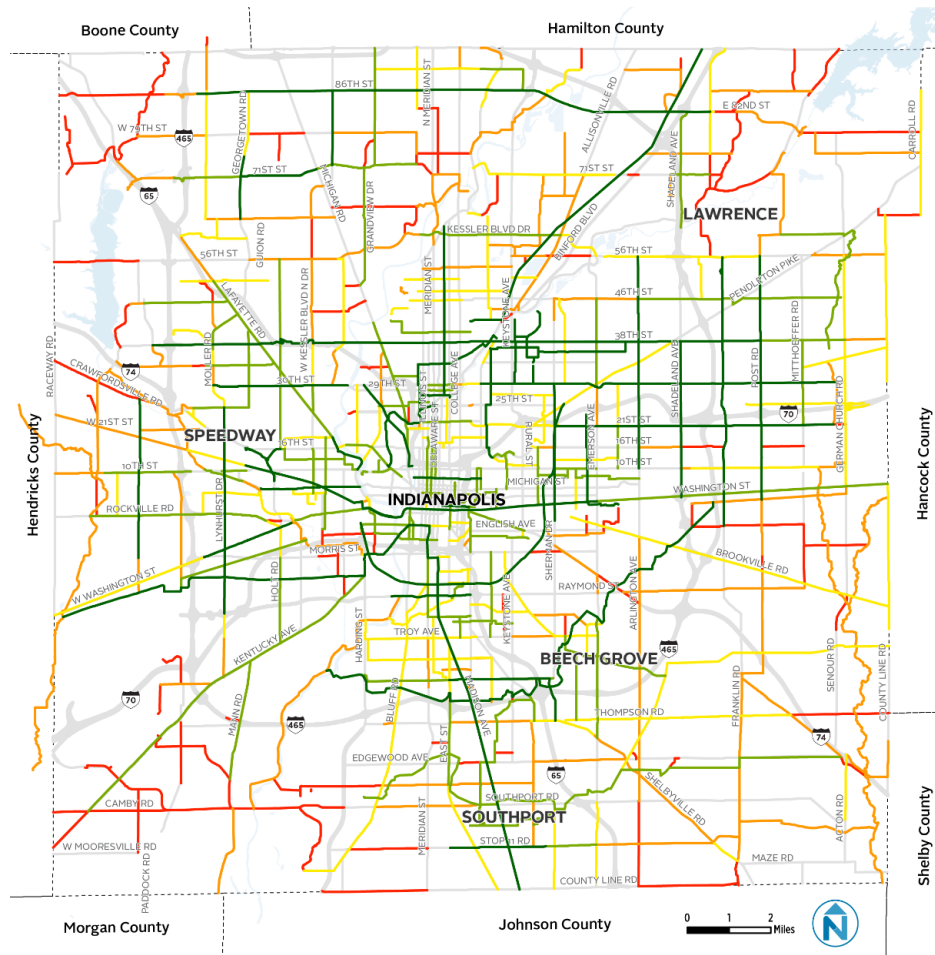
L RTP appropriateness



Step 3: Score Projects

Quantitative and GIS-based tiering

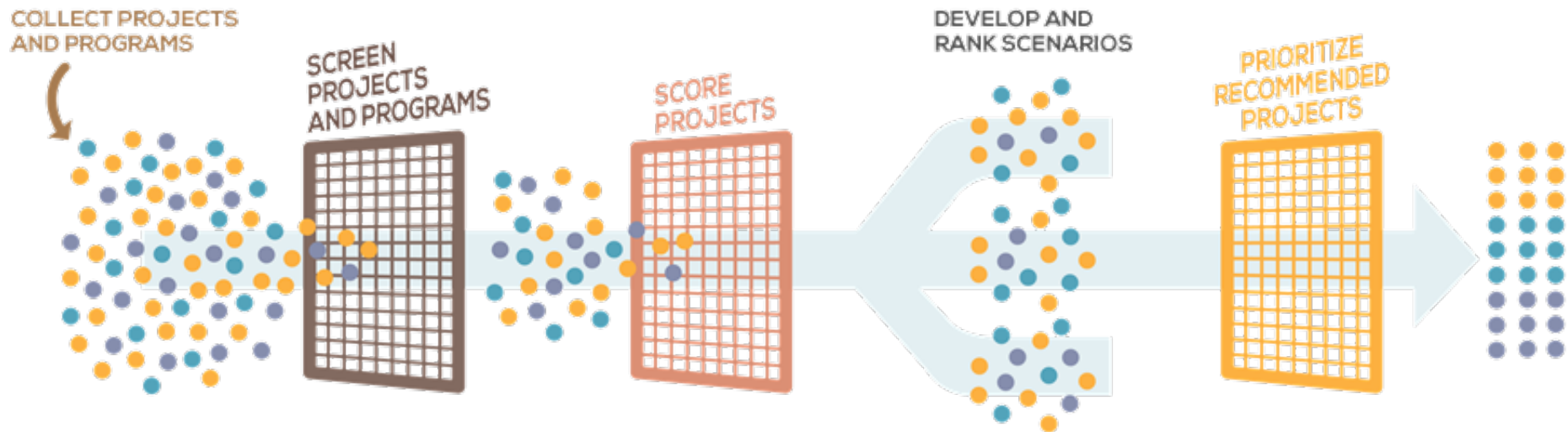
- Provide ability to score many projects quickly
- Establish geographic criteria tied to desired outcomes
- Focus on yes/no rather than gradations of points
- Get to tiers rather than Project #1, Project #2, and beyond
- Save descriptive and qualitative measures for prioritization



TAC Discussion

Initial thoughts and feedback

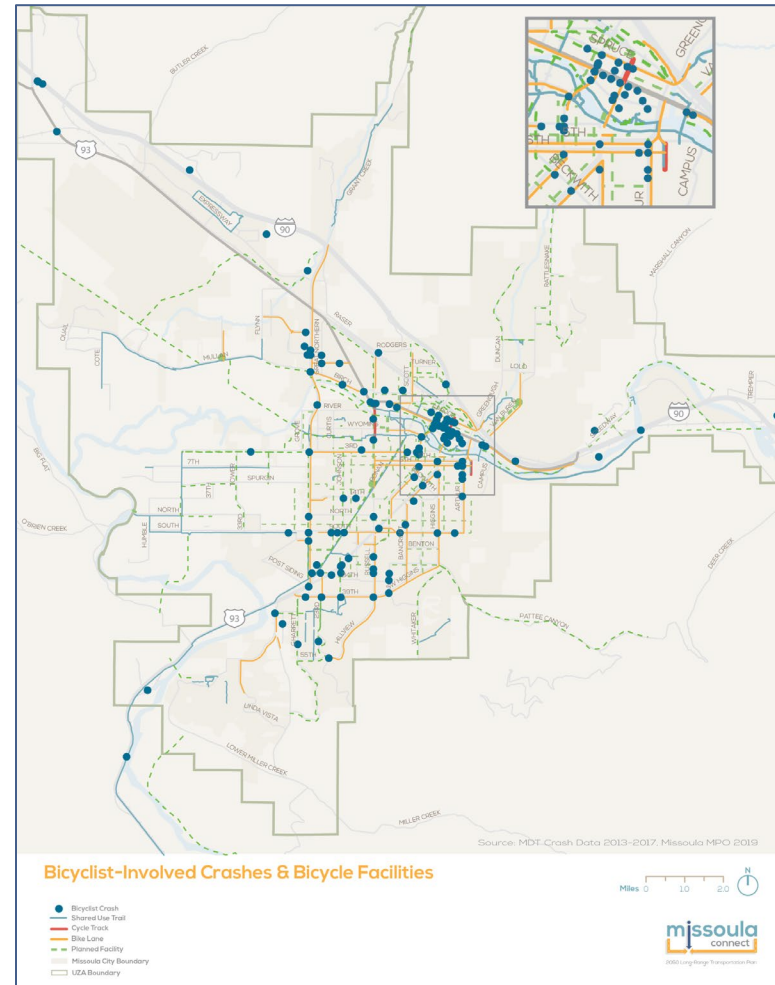
- Does this approach make sense?
- In Step 3, what criteria are missing or need revision?
- Do you have data to support any new criteria?



Project Identification

Small group workshops

- Work with your group to identify gaps or needs
- Consider modal networks and also areas
- Identify any changes that might be needed to current LRTP projects
- Bring 1-2 ideas back to the full group
- Review public Call for Projects tools and resources



Funding Tradeoffs

Relative priorities for investment

Go to www.menti.com and use the code 87 45 99

How would you prioritize the following bicycle network improvements?

1st New on-street bicycle lanes/routes

2nd New commuter paths (or off-street trails)

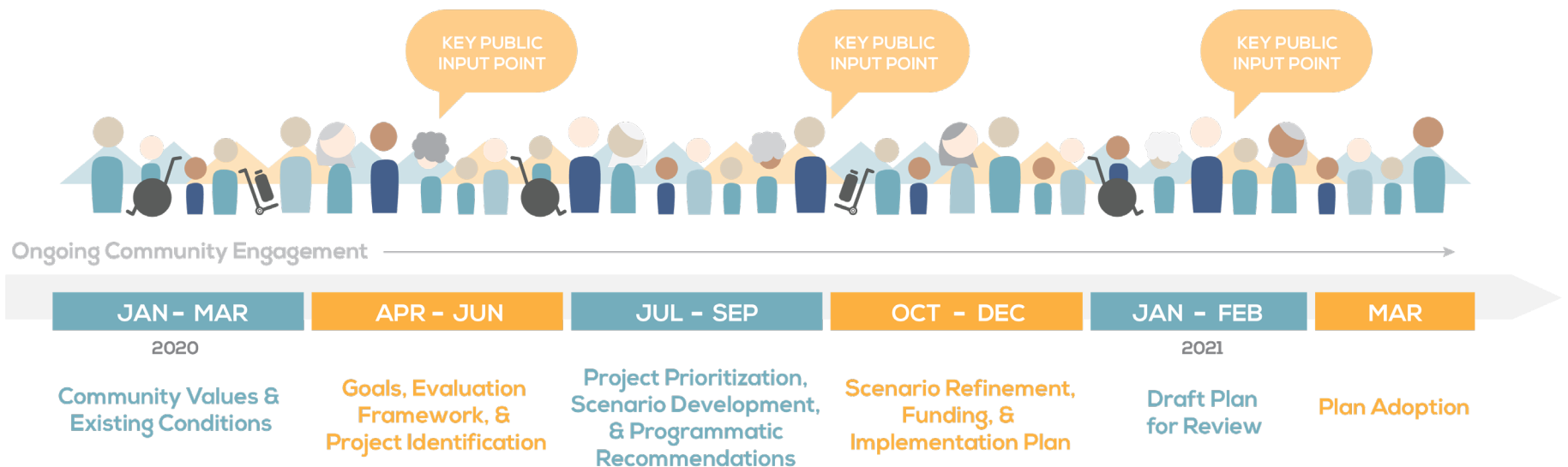
3rd Enhance existing on-street bicycle facilities (e.g., convert sharrows to bike lanes, bike lanes to protected facilities)

4th More secure bicycle parking

Next Steps

Priorities for June

- Host project identification workshops with LRTP Citizens Advisory Committee and STAC
- Finalize draft goals and performance measures
- Refine evaluation and prioritization framework



Thank you!

Aaron Wilson, MPO
wilsona@ci.missoula.mt.us

Jennifer Wieland
jwieland@nelsonnygaard.com

missoulampo.com/long-range-transportation-plan