



2050 Long-Range Transportation Plan

Citizens Advisory Committee

Meeting #1 | March 5, 2020





Welcome & Introductions

Meet the CAC

- Why are you excited to serve on the CAC?
- What mode of transportation did you use to get here today? What mode would you like to use in the future?



DRIVE ALONE



WALK OR ROLL



BUS



BICYCLE



SKATEBOARD
OR SCOOTER



MOTORCYCLE



TAXI OR
RIDE HAIL



BROOMSTICK



Role of the CAC

Our Role

- Providing Advice and Input
- Making Recommendations
- Engaging with Your Constituency
- Speaking to the Media

Are you comfortable with the expectations of the Citizens Advisory Committee?



How We Work Together

- Recognize Individual
- Respect and Accountability
- Prepared and Present
- On Topic and On Time
- Step Up and Step Back
- Opinions
- Ask for Clarification



Are there changes or additions you would suggest to these ground rules? Can you agree to them?



Project Opportunities & Work Plan

Building on a Strong Foundation

Reflect what's been done before

- Updated travel demand model (including active transportation)
- Robust engagement foundation
- Clear articulation of goals
- Positive trends toward sustainable and multimodal transportation



ACTIVATE
MISSOULA 2045

Activate Missoula 2045

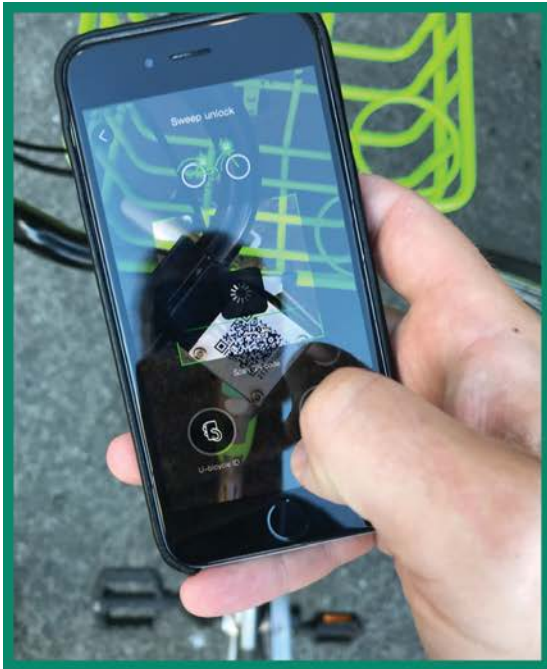
Missoula Long Range Transportation Plan
March 2017



2050 Long-Range Transportation Plan

Understanding Current Trends

Technological, natural, and cultural forces



TECHNOLOGY AND DISRUPTORS



RESILIENCY



PRIVATE SECTOR ROLE

Framing Growth, Density, and Affordability

Understand who benefits

- Use the updated model to understand how investments impact people
- Connect project types and allocations to affordability
- Support existing industry and future jobs to enhance economic competitiveness



Connecting Urban and Rural

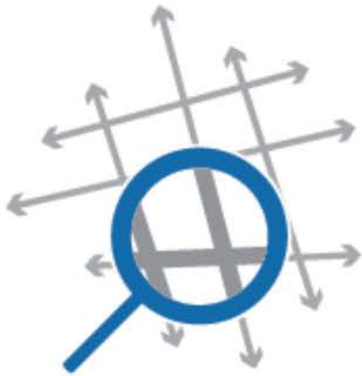
Reflect unique contexts and identities

- Bring the whole County into the conversation
- Create tailored solutions
- Use new approaches to address shifting modal preferences
- Build on interest in active transportation and growing transit ridership

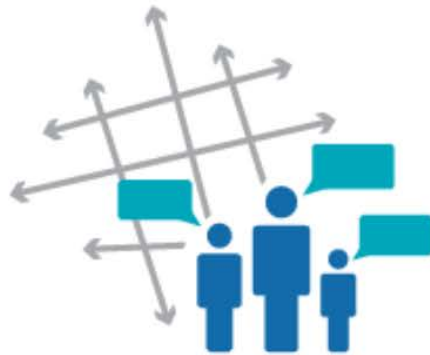


Our Approach

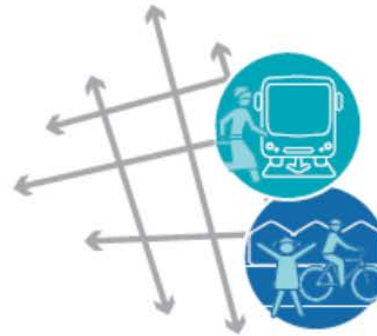
Four integrated phases



Discovery



Desire



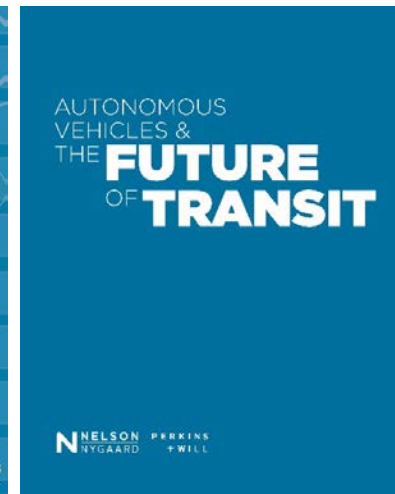
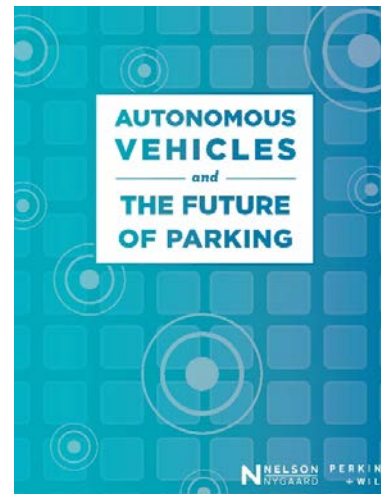
Design



Document






Framing the Challenge and Establishing Outcomes

- Public Involvement Plan
- Existing Conditions Findings
- Goals & Performance Measures
- Evaluation Framework
- Emerging Mobility Playbook
- Project Identification



Creating and Evaluating Solutions

- Project Evaluation Results
- Scenario Development & Review
- Recommended Scenario
- Project Descriptions & Cost Estimates

HELE MAI MAUI GOALS & OUTCOMES	
Goal #1: Improve safety and promote health  <ul style="list-style-type: none"> • Eliminate injuries and fatalities • Improve safety for people walking and biking • Increase physical activity 	
Goal #2: Enhance cultural and natural resources, climate resilience, and sustainability  <ul style="list-style-type: none"> • Improve climate resilience and adaptability of infrastructure • Reduce transportation-related air emissions • Protect or enhance cultural resources 	
Goal #3: Expand mobility choices to reduce traffic congestion  <ul style="list-style-type: none"> • Reduce delay • Increase street, trail/greenway, and sidewalk network connectivity • Improve freight and transit movement 	
Goal #4: Connect and strengthen communities to improve quality of life  <ul style="list-style-type: none"> • Improve access to and resilience for town centers, schools, jobs, parks, and basic life needs • Provide mobility benefits to vulnerable populations 	
Goal #5: Maintain assets and invest strategically for economic vitality  <ul style="list-style-type: none"> • Bring existing infrastructure and transit assets into a state of good repair • Balance cost-effective, implementable projects with high-impact projects 	

SCENARIO EVALUATION RESULTS		
1 = PROVIDE NEW CONNECTIONS	2 = CREATE A MULTIMODAL SYSTEM	3 = TAKE CARE OF WHAT WE HAVE
LOW	HIGH	MED
LOW	HIGH	MED
MED	HIGH	MED
MED	HIGH	MED
LOW	MED	HIGH

Reviewing Priorities and Recommendations





- Financial & Implementation Plan
- Programmatic Recommendations
- Draft & Final Plan

Protected bike lanes on Arlington Ave, from 10th St to 56th St

Project Need

- » Provide key north-south bike connection for Warren and Lawrence Townships
- » Connect Pleasant Run and Fall Creek, via existing bike lanes south of 10th St, 46th St and Emerson Ave
- » Improve safety for all, as Arlington Ave overlaps with several high-crash zones
- » Increase connections to schools
- » Support future frequent transit service south of 42nd St

Features

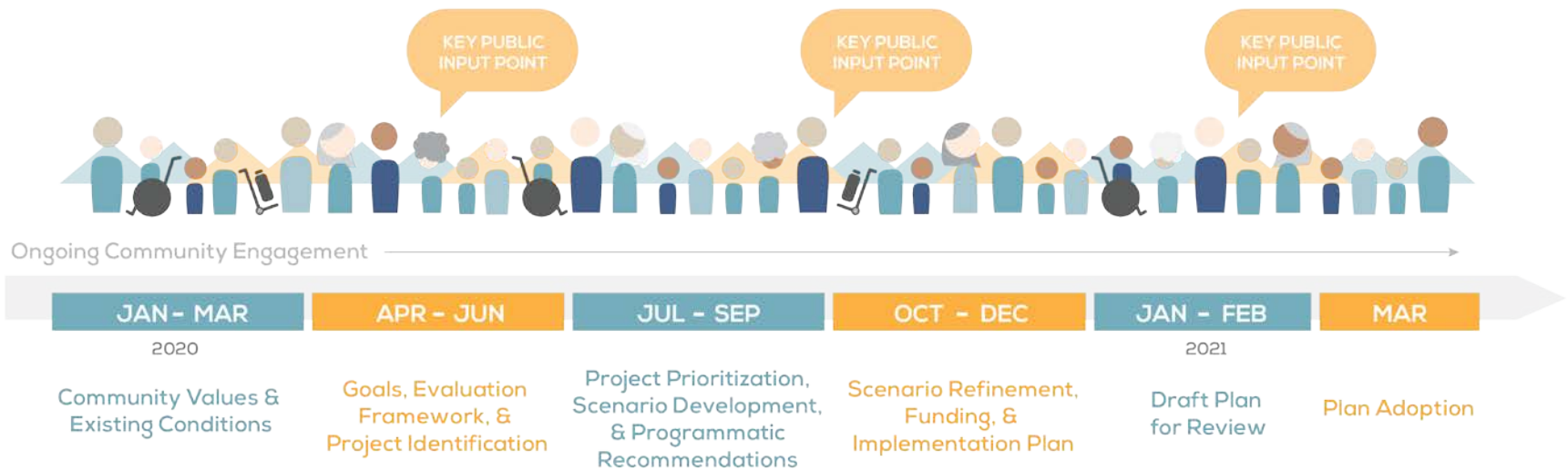
-  One-way protected bike lane on each side of the street
-  Intersection improvements, including protected intersection treatments, high-visibility crosswalks, and ADA-compliant curb ramps
-  Floating bus islands that route bikes away from traffic and behind people waiting at the bus stop
-  Traffic signal upgrades

Key Considerations

- » Low vehicle volumes support repurposing outer travel lanes into one-way protected bike lanes
- » Focus intersection improvements at challenging locations such as the five-way intersection at E 34th and Massachusetts Ave
- » Frequent transit route should account for needs of transit and cyclists



Project Schedule



Your Turn

My big idea for the future of
transportation in **MISSOULA** is ...



Public Engagement

Needs Assessment Findings

- Communicate the role of the MPO
- Front-load engagement opportunities to get the public involved early
- Use values-based metrics to guide decision making
- Set the backdrop to explain why we need an update every four years



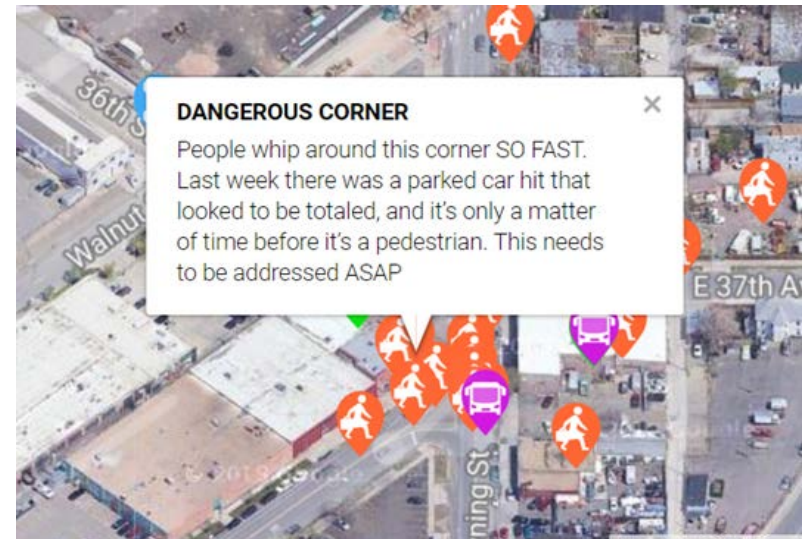
Public Involvement Goals

- Create an informed public pertaining to Missoula Connect and the MPO's role
- Build public trust in the MPO and demonstrate the investment of the MPO in the larger planning area
- Form a more collaborative, positive relationship with leaders in the Missoula Valley



Potential Tools

- Surveys and values exercises
- In-person and online open houses
- Pop-up events
- Community partner meetings
- Standing drop-in meetings
- Media relations and press releases



Your Ideas

- What ideas do you have for engaging those you know best?
- What has worked well before? What hasn't?





Initial Existing Conditions

Recent Projects

- I-90 interchanges at Orange St & Van Buren St
- Bitterroot Trail completion through MRL Park and bridge over Reserve St
- Russell St
- Missoula ADA upgrades
- Reserve St barrier
- Madison St Bridge



2019 Transportation Survey

- Less than 1/3 of residents rated the transportation system as “fair” or “poor”
- City residents are more satisfied with the transportation system than County residents
- Transit and active mode commuters are more satisfied than auto commuters



2019 Transportation Survey

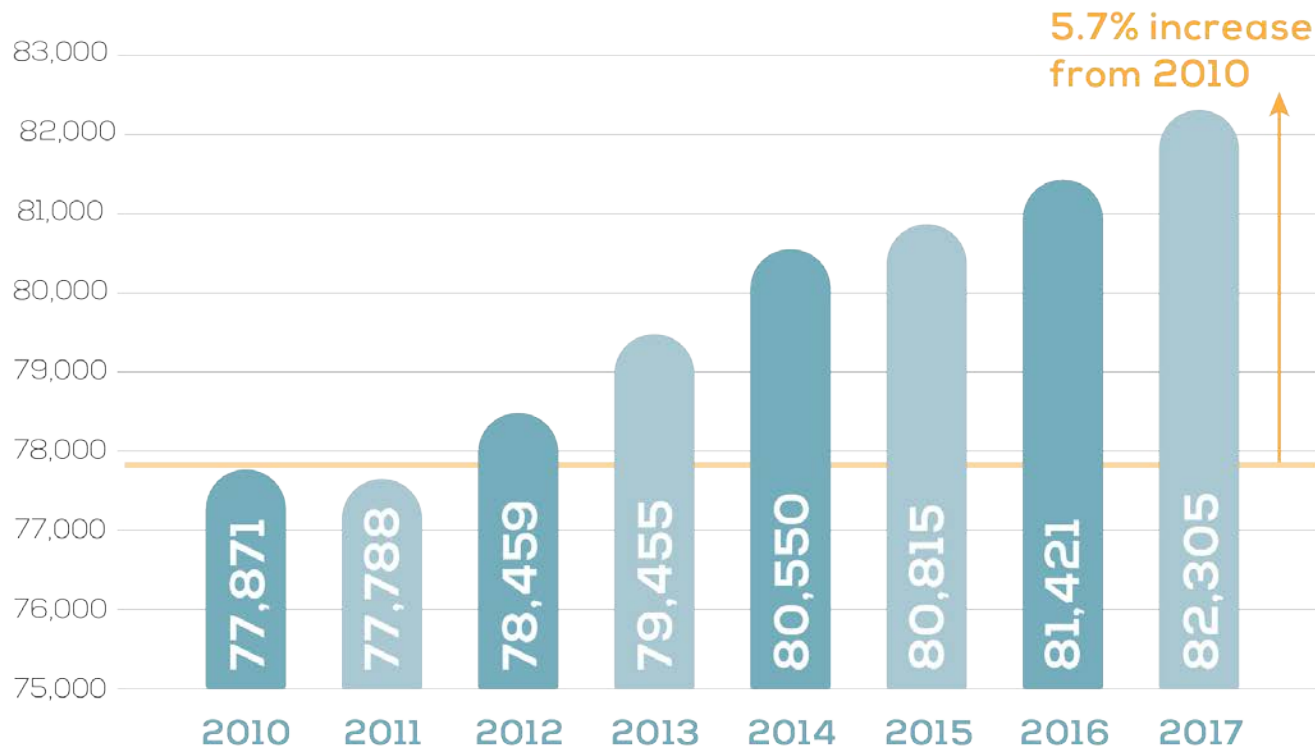
- Top priority investments
 - Transit (22%)
 - Roadway Maintenance (19%)
 - Bicycle/Ped Facilities (15%)
- City residents prioritized transit and biking and walking investments, while County residents prioritized roadway maintenance



Getting to Know Missoula

Missoula area residents

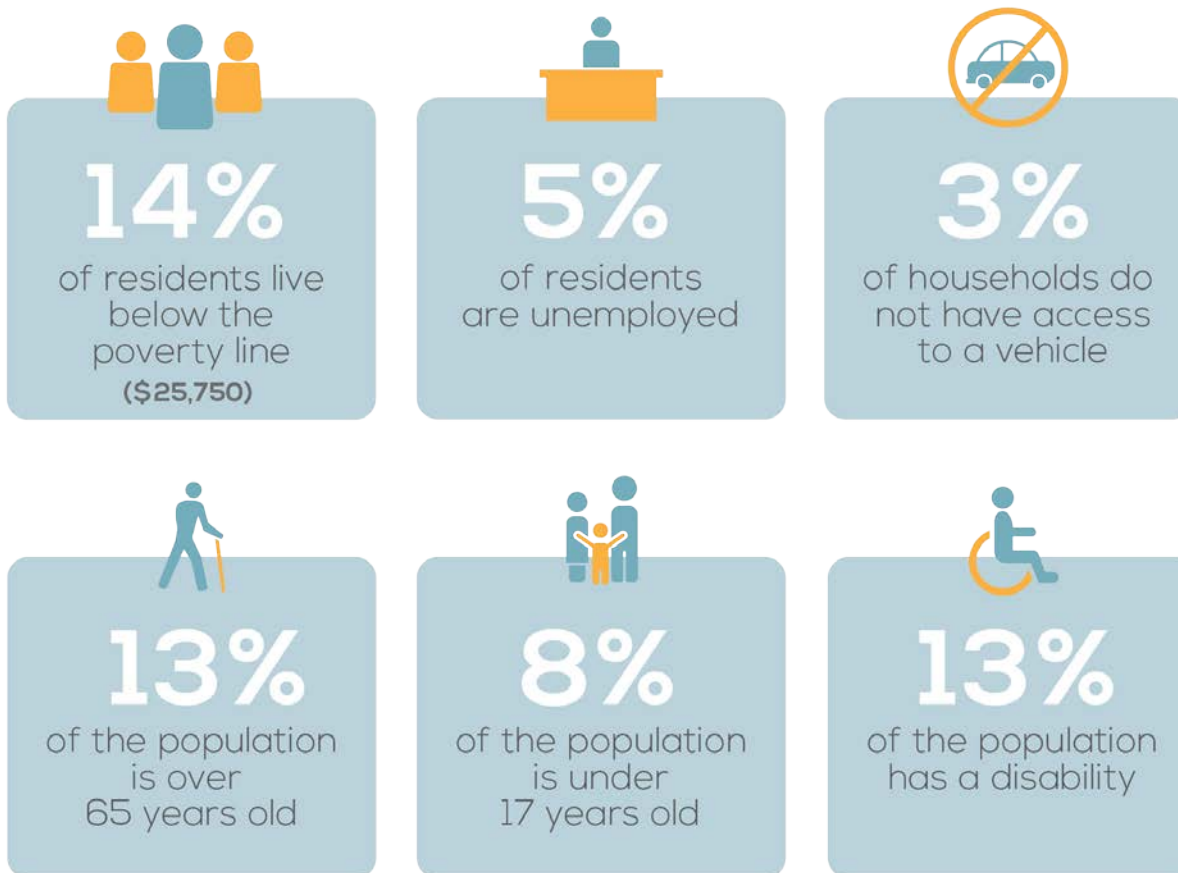
Population Growth



Source: 2013-2017 ACS 5-Year Estimates, Total Population

Getting to Know Missoula

Missoula area residents



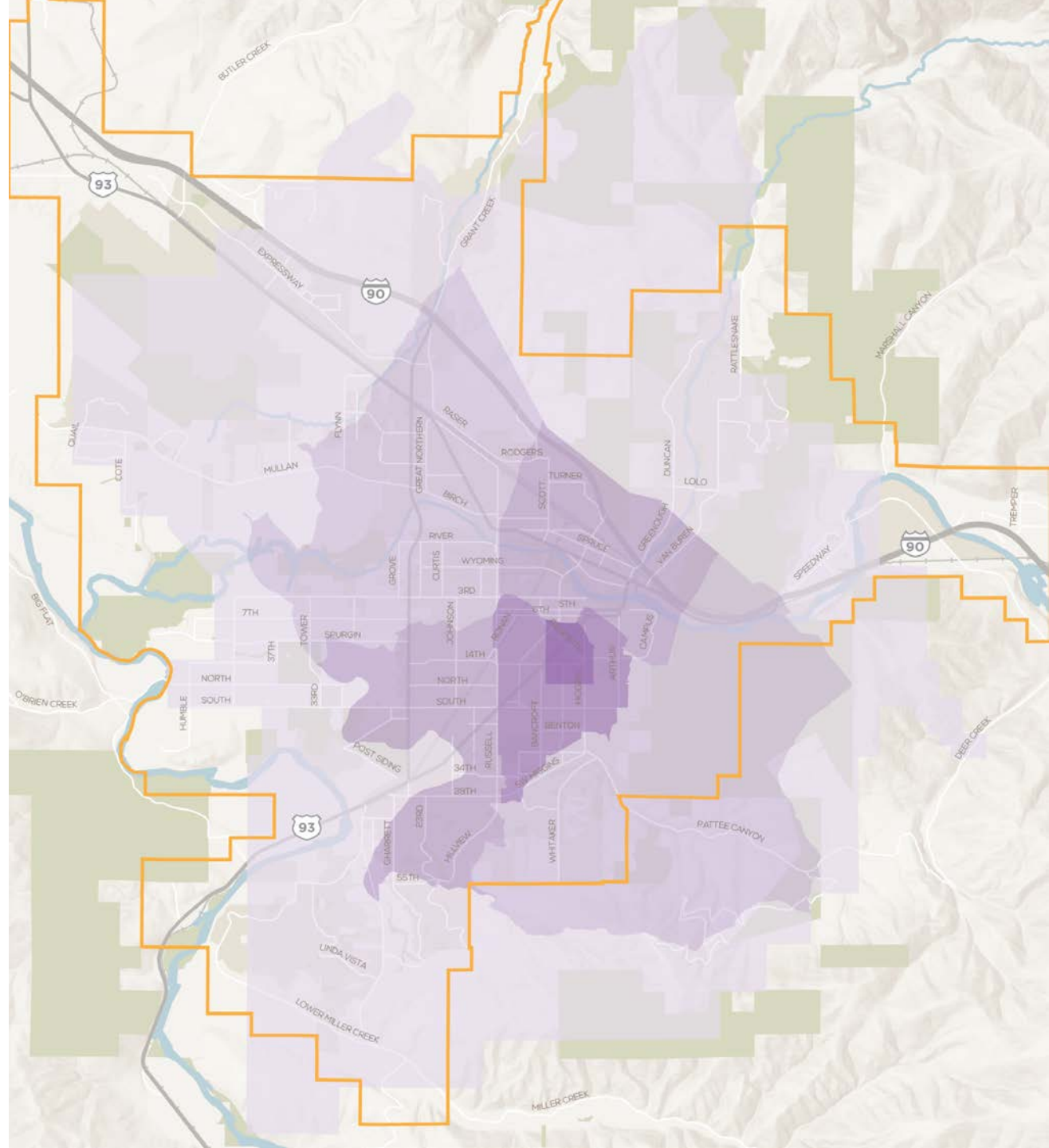
Source: 2013-2017 ACS 5-Year Estimates

Draft Equity Index

Factors

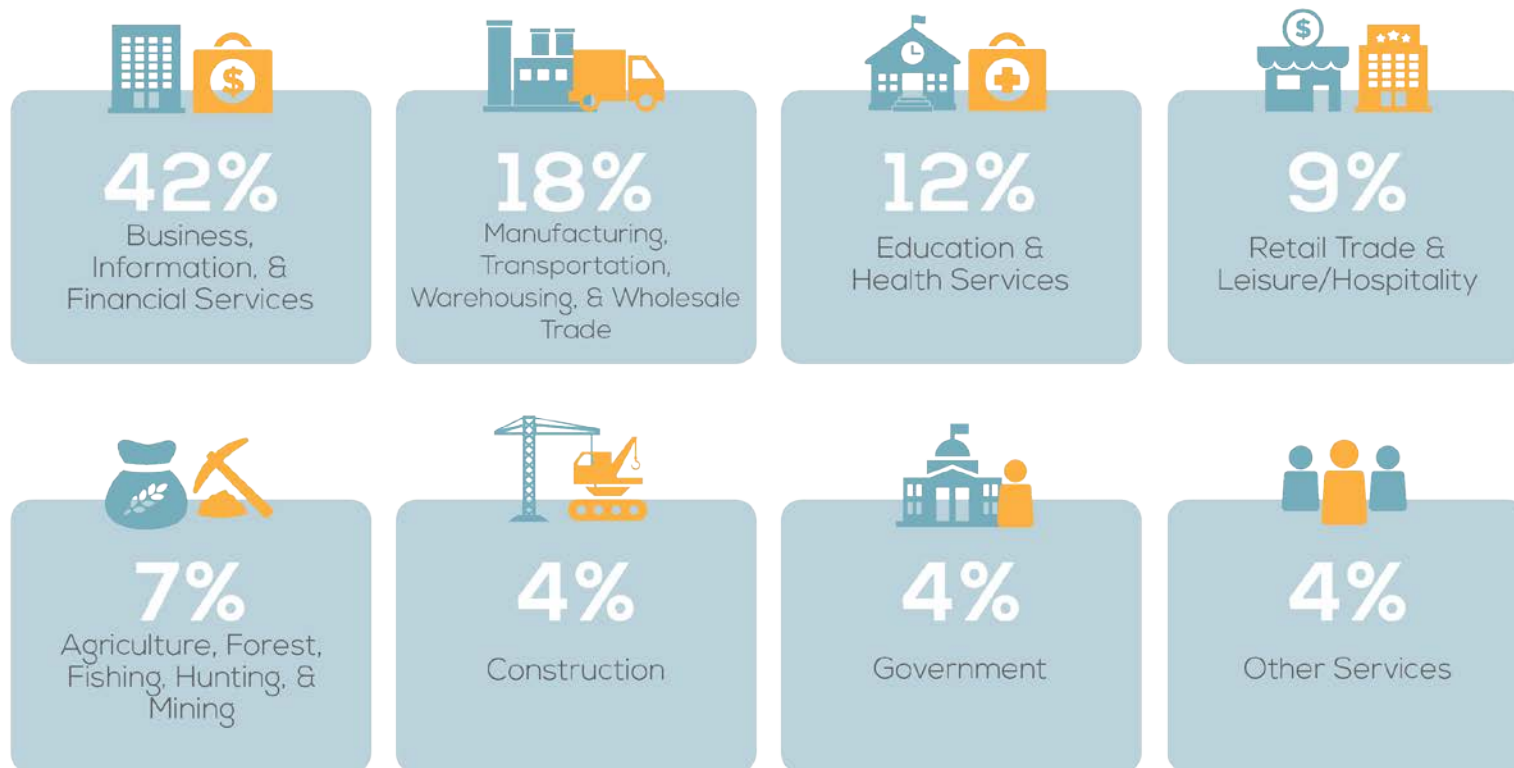
- Age 65+
- Age Under 18
- Low Income
- Disability
- Limited English Proficiency
- Race/Ethnicity
- Vehicle Access

Missoula City Boundary
UZA Boundary



Getting to Know Missoula

Missoula area workers

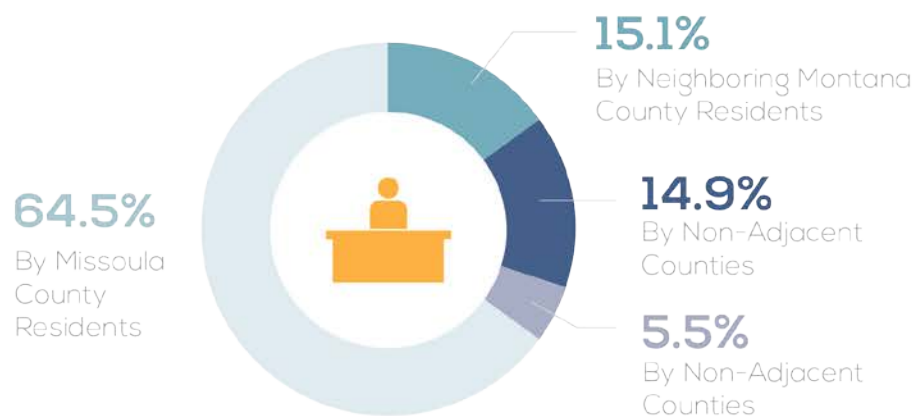


 **45% of all workers in Missoula County earn less than \$35,000**

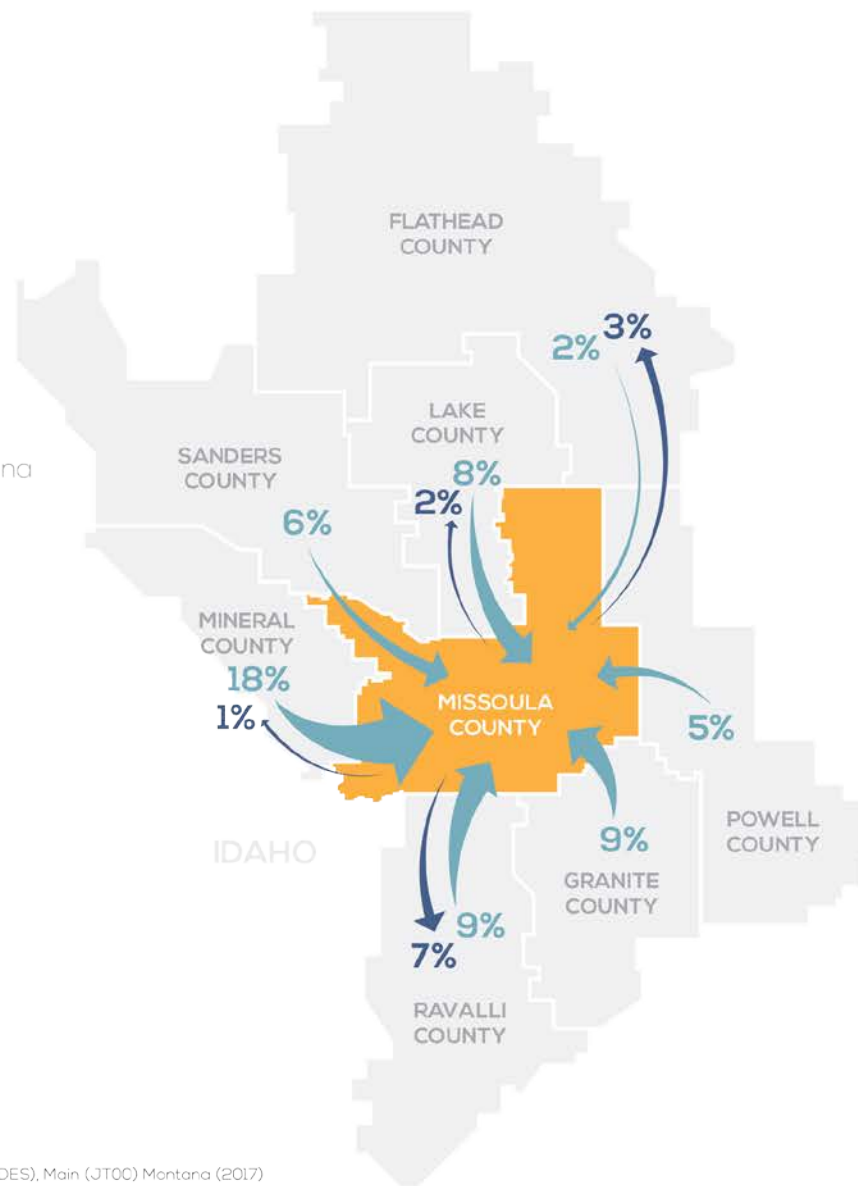
Source: 2013-2017 ACS 5-Year Estimates, Industry by Occupation for the Civilian Population 16 Years and Older

Commute Patterns

Total Jobs in Missoula County Filled

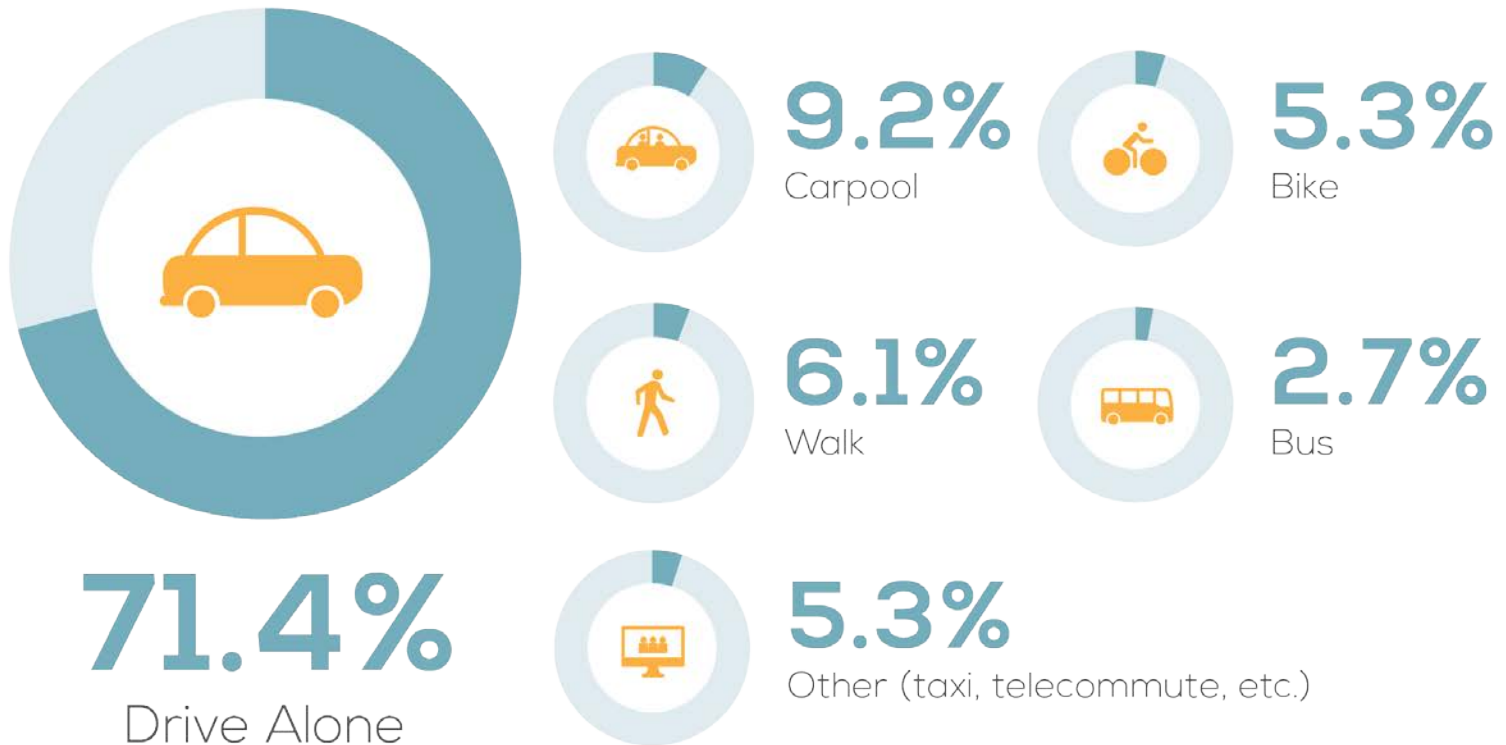


“About a **third** of Missoula County workers commute from another county.”



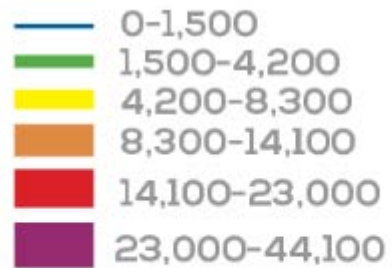
Source: U.S. Census Longitudinal Employer-Household Dynamics, Origin-Destination Employment Statistics (LODES), Main (JT00) Montana (2017)

Getting Around Missoula Today

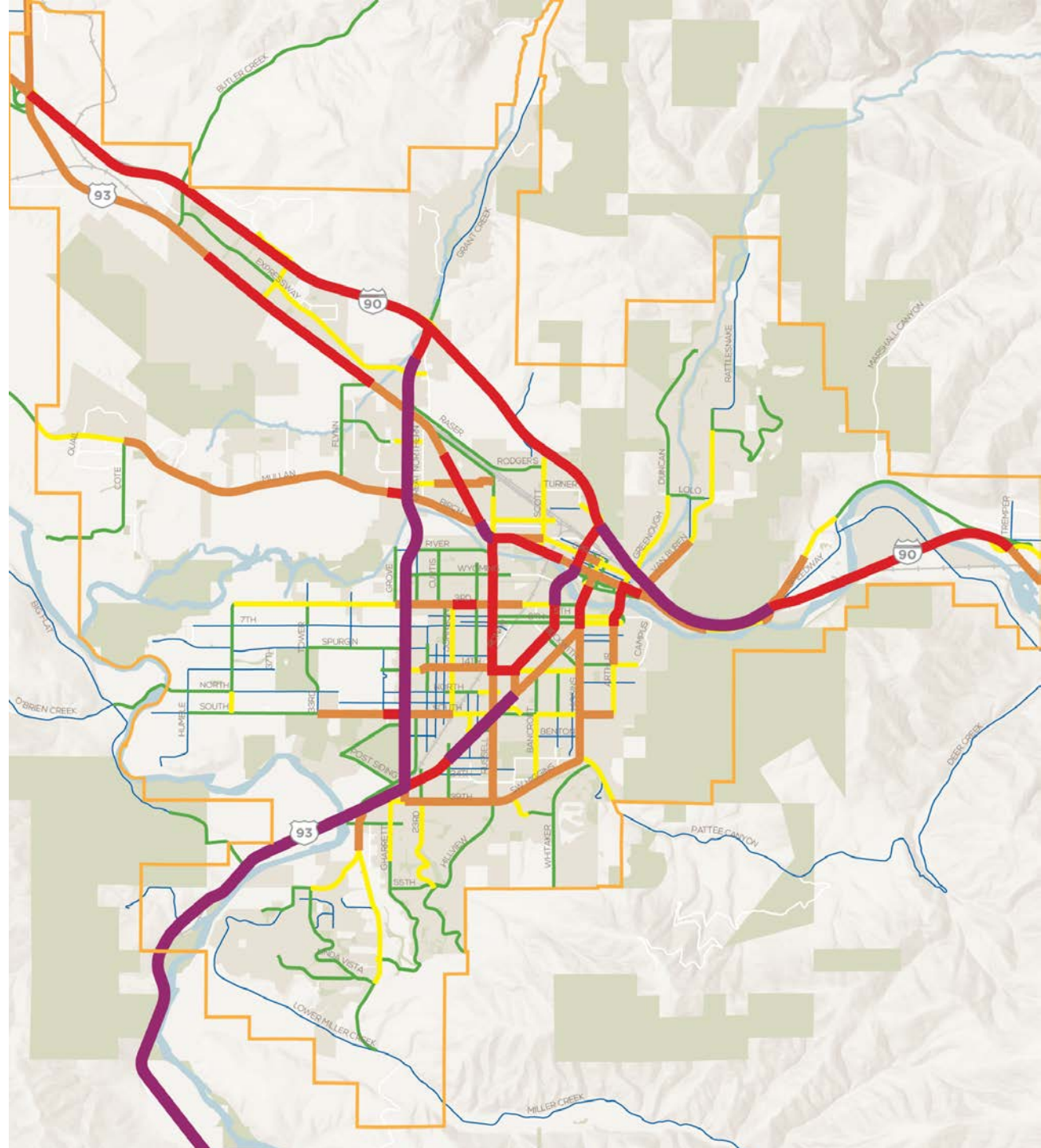


Source: 2018 American Community Survey 5-year data

Average Annual Daily Trips 2019



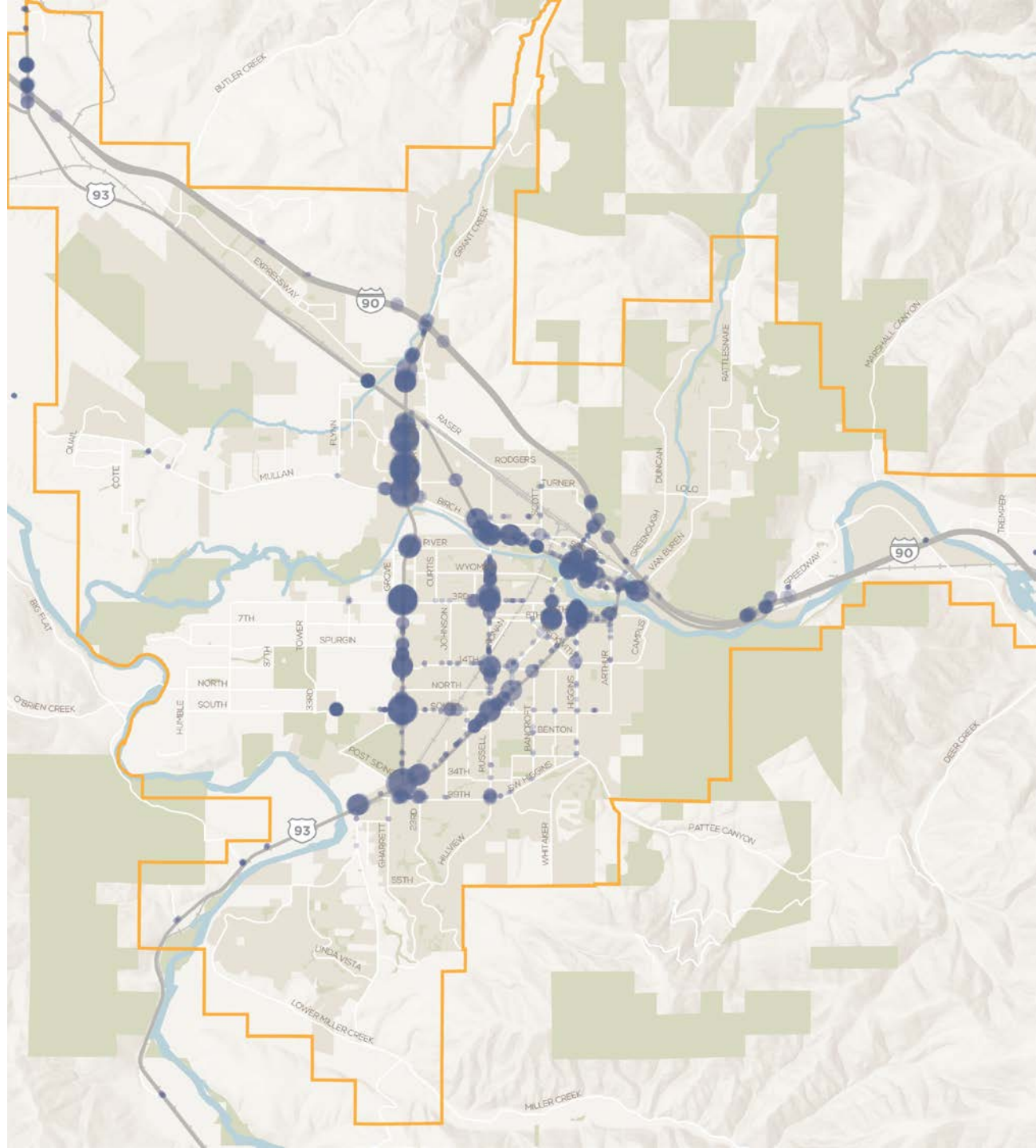
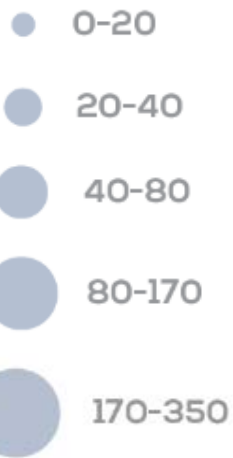
Missoula City Boundary
UZA Boundary



Crash Density: All Modes

2013-2017

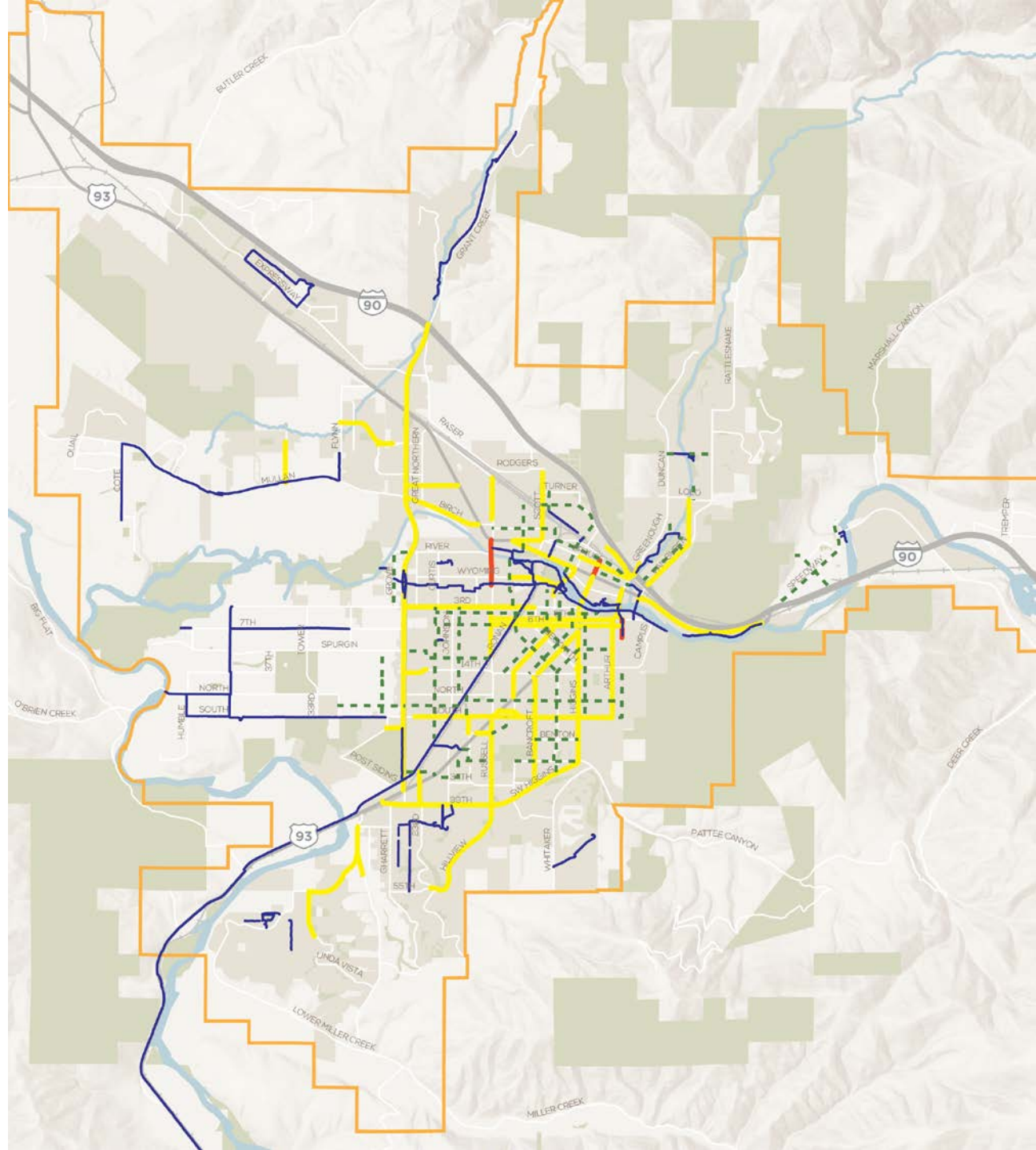
Number of Collisions



Bicycle Network

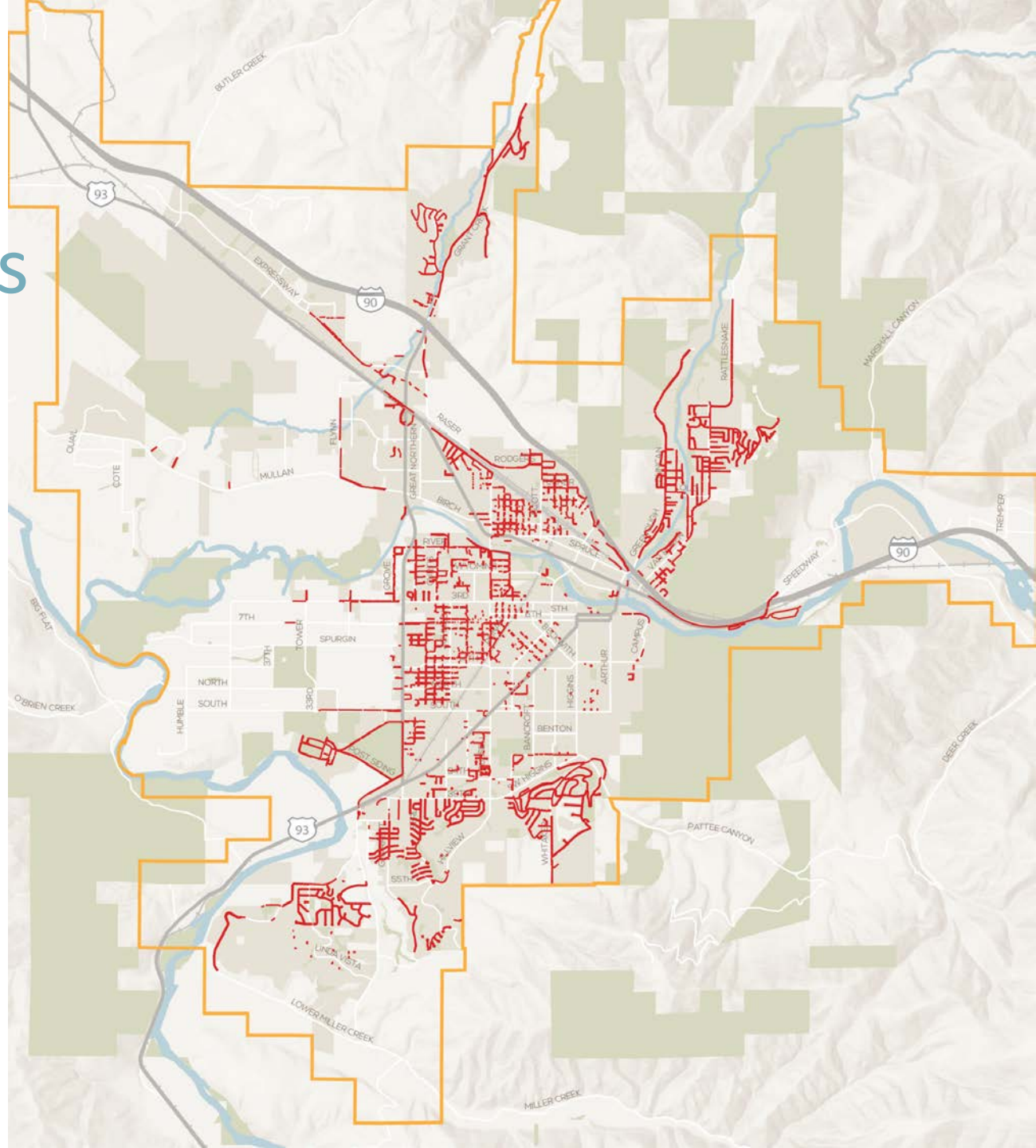
2019

- Shared Use Trail
- Cycle Track
- Bike Lane
- Proposed Greenway
- Missoula City Boundary
- UZA Boundary



Pedestrian Network Gaps 2019

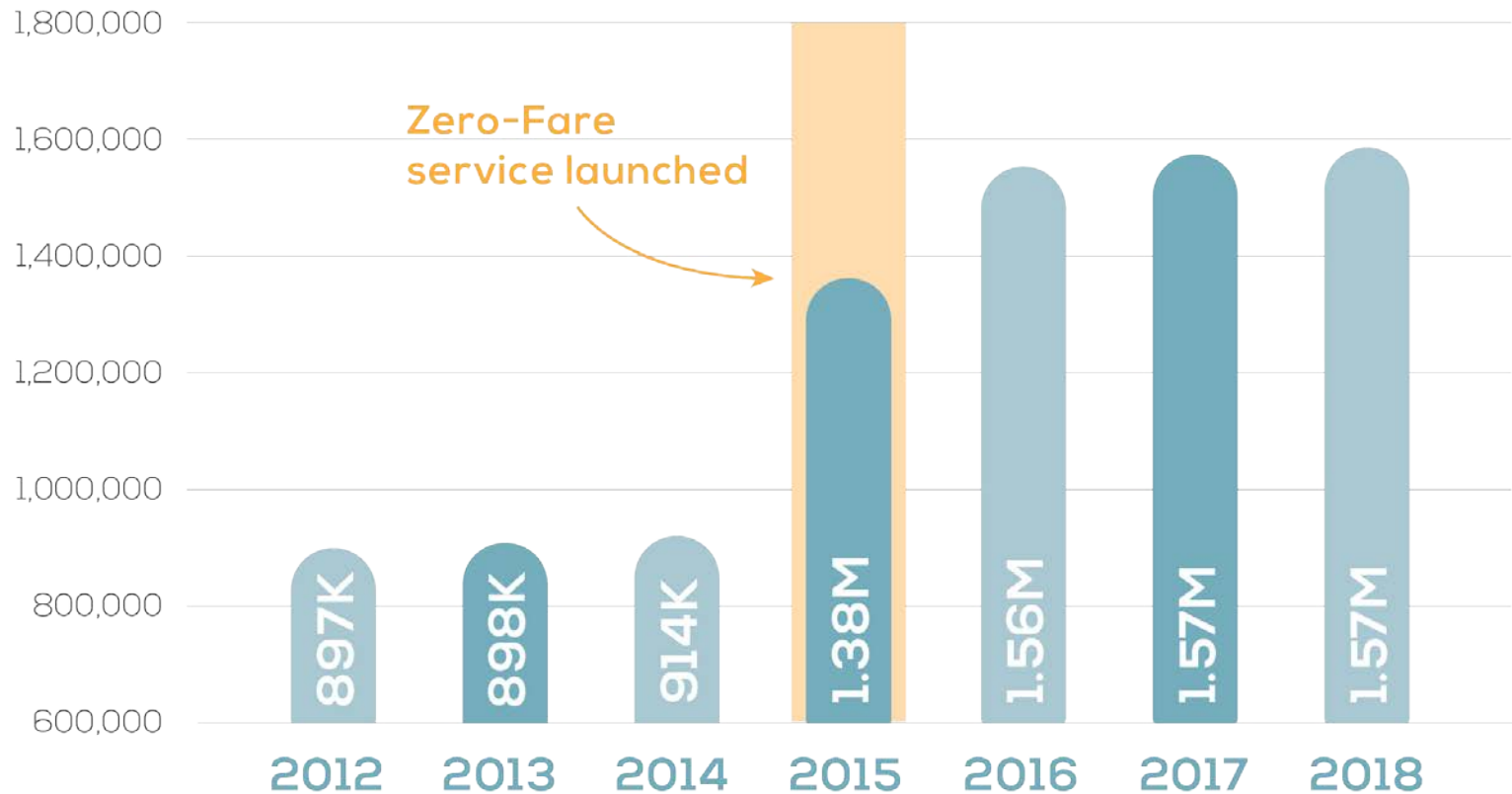
- Missing Sidewalk
- Missoula City Boundary
- UZA Boundary



Example Pedestrian Network Gaps



Transit Ridership



Source: 2018 MUTD

Your Feedback

- What haven't we covered that is important to you and your community?
- What additional information would you like to see?

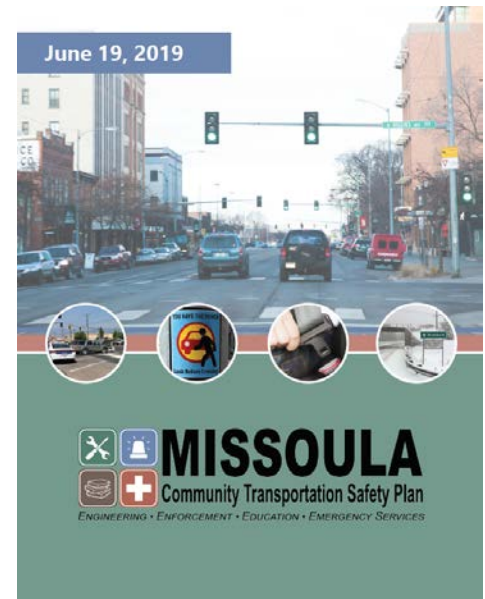




Values to Guide the Work

Values in Adopted Plans

- Provide equitable access regardless of age and ability
- Improve safety for all modes
- Reduce risks through data-driven prioritization
- Ensure non-motorized facilities are accessible for all
- Facilitate proactive public involvement
- Educate people on safe travel practices



Current LRTP Goals

ACTIVATE MISSOULA 2045 GOALS

- **Maintain our existing transportation system**
- **Improve the efficiency, performance, and connectivity of a balanced transportation system**
- **Maximize the cost-effectiveness of transportation**
- **Promote consistency between land use and transportation plans to enhance mobility and accessibility**
- **Provide safe and secure transportation**
- **Support economic vitality**
- **Protect the environment**
- **Promote community health and social equity through the transportation system**

Your Mobility Values






Next Steps

Priorities for March and April

- Launch Citizens Advisory Committee and Technical Advisory Committee
- Hold public open house
- Continue existing conditions analysis and background research
- Highlight key challenges and opportunities to address
- Develop draft goals and performance measures



The Metropolitan Planning Organization and
The Historic Preservation Office present

HISTORY OF TRANSPORTATION & PLANNING

Missoula, Montana

5:00 pm - 7:00 pm
First Friday, March 6, 2020

Lower Level of The Hammond Arcade, 101 S. Higgins Ave.
(accessible entrance through Carousel Drive alley)

Signs of the Times, featuring vintage sketches of iconic
Missoula businesses will be on display as well!

Photos from Archives & Special Collections, Mansfield Library, The University of Montana - Missoula

Thank you!

Aaron Wilson, MPO
wilsona@ci.missoula.mt.us

Jennifer Wieland
jwieland@nelsonnygaard.com

missoulampo.com/long-range-transportation-plan